

Nature & Technology in Perfect Harmony

North Cape

North Cape, home to a host of unique attractions, located at the Northwestern tip of Prince Edward Island on the **North Cape Coastal Drive**. *Once you get here you'll never want to leave!*

The Reef at North Cape Longest natural rock reef in North America - the site of many early shipwrecks - you can walk out onto the reef at low tide and witness the "meeting of the waters" as the Gulf of St Lawrence and the Northumberland Strait converge as the tide moves back in. Ideal spot for seal watching!

Atlantic Wind Test Site & Wind Farm For more than twenty years the Atlantic Wind Test Site has been Canada's national wind R&D centre. The site is currently testing the largest wind mill in North America and together with the wind farm produces 5% of PEI's energy!

Wind Hydrogen Village North Cape is home to a demonstration wind-hydrogen village to explore the prospects of hydrogen and wind energy.

Wind Energy Interpretive Centre New interactive displays and visual presentations dedicated to wind energy and the special technology to harness it. Visitors can also explore the colourful history of North Cape and its people.

North Cape Gift Shop & Island Welcome Centre One stop souvenir shop, local handcrafts, and information!. Ask about our Tip to Tip promotion! Phone 882-2991.

Wind & Reef Restaurant Dine on succulent seafood while enjoying your panoramic view of the ocean and reef below! Reservations recommended. Phone 882-3535.

Black Marsh Nature Trail The only coastal nature trail with bilingual interpretive signage in Prince Edward Island. Learn more about the area's history, local fishing and the unique coastal ecology.

North Cape Lighthouse Constructed in 1866 it remains one of the most important lights on PEI, warning ships of the 2 mile long rock reef.

Tignish Heritage Inn & Gardens While in the area stay at the Tignish Heritage Inn and enjoy the beautiful gardens. 1-877-882-2491 or locally 882-2491. www.tignish.com/inn email: heritageinn@tignish.com



North Cape Coastal Drive
It takes you places you'll never want to leave.

Your Prince Edward Island vacation is not complete without a visit to North Cape.

www.tignish.com/northcape • email: northcape@tignish.com



THE ONLY MUSEUM OF ITS CLASS

Prince Edward Island Potato Museum

1 Dewar Lane off Parkview Drive, PO Box 602,
O'Leary, PEI C0B 1V0 (902)859-2039

Self-guided interpretive centre with bilingual storyline supported by photographs, artifacts, and graphics tells the story of the potato. Large collection of antique machinery related to the potato industry. Resource room and gift shop with potato theme.

View the giant sculptured potato.

Over 7000 sq. ft. of air conditioned comfort.

Other attractions include a community museum, the O'Leary switchboard office, heritage chapel, log barn of farm implements and machinery, and the one-room school from Alaska, P.E.I.

Sample our potato fare in our kitchen during July and August.

availability subject to change

Open May 15 - Oct. 15, Mon. - Sat. 9 am - 5 pm, Sun. 1 - 5 pm

Admission \$5.00 per person, \$12.00 per family, Group/Bus \$3.00 ea. (includes all attractions in complex, tax extra)

Visit our website: www.peipotatomuseum.com

Northport Pier

Serenity achieved

A unique destination in the midst of a quaint fishing village.

Enjoy outdoor concerts, a stroll on the boardwalk; and a panoramic view with great blue herons gracing the shoreline. Minutes from shopping, museums and golf.

Northport Pier Inn ★★★★★ 1-866-887-4520

14 cozy rooms with balconies overlooking the harbour and lighthouse.

The Pier Restaurant 902-853-4510

A relaxed dining experience offering a traditional sea faring menu with an amazing waterfront view.

The Boat Shop 902-853-3424 or 902-853-4530

Local art and Maritime treasures. Soak in nautical culture at our Sea Rescue Interpretive Centre.

Northport Marina 902-853-3016 or 902-853-3424

Fresh water, electricity, shower and laundry facilities.

www.northportpier.ca



• ANTIQUES •

CENTRAL BEDEQUE F-6
ROSE GARDEN ANTIQUES
& COLLECTIBLES



432-0617

Located in the Wm. Callbeck Centre, 950 Callbeck St., off Rte 1A on Rte 171. Quality furnishings, glass, china and more. "A better way to buy." Open year round by chance or appointment. May-Dec, most Sundays, 1-5 pm.

SUMMERSIDE AREA E-6
HOMESTEAD ANTIQUES,
GIFTS & GARDENS



436-7766

kathleenrogers@eastlink.ca (Summerside), 286 Fitzroy St. 1855 Colonial Georgian on Historic Walking Tour, acclaimed as "one of the best shops on the Island" by *Canadian Home & Country* magazine. Browse nine captivating rooms and experience the surprising array of unique gifts and decor, antique furniture, glassware, collectibles and local works, Dept. 56, Williraye, Charming Tails, candles and garden flags. Stroll in one of the oldest continuously kept gardens in North America. Open Apr-Jan. Mon-Sat, 10 am-5 pm; Sun, 12 noon-4 pm (July and Aug).

RIVERVIEW ANTIQUES



436-4977

(Travellers Rest). On Rte 2 East at Travellers Rest. Gloria MacArthur. Large selection of furniture, glass, spinning wheels, etc. Shipping/delivery. Open year round.

• ART GALLERIES •

BIDEFORD D-4
WEST ISLAND ART
GALLERY CO-OP



831-3048 (after hours)

wiag_2001@yahoo.com

www.geocities.com/wiag_2001

On Rte 166. Open June 16-Sept 30, daily, 10 am-4 pm; Sun, 1-4 pm. Free admission.

• ATTRACTIONS •

ALBERTON C-3
ALBERTON MUSEUM &
GENEALOGY CENTRE



853-4048; ahf@isn.net

457 Church St. Alberton Museum is housed in the former town courthouse and jail erected in 1878, the only National Historic Site and Provincially Designated Historic Site west of Summerside. The museum's artifact collection depicts the range of activities carried out by PEI's early settlers. Featured displays include: early fishing industry, military history, silver fox industry, Mi'kmaq culture, house hauling, early pharmacy, cooper shop, cobbler shop, local historic crafts, housewares, local folk art, china, etc. The museum boasts the largest collection of historical photographs and most comprehensive compilation of genealogical information in the area. Open June-Sept, daily, 10 am-5:30 pm; Sun, 1-5 pm. Admission by donation.

BAYSIDE E-5
CAERNARVON COTTAGES,
B&B AND GARDENS

854-3418; toll free 1-800-514-9170

2cappers@pei.sympatico.ca

www.cottagelink.com/caernarvon

Caernarvon Gardens feature a gazebo/34-ft. look-off exclusively for our guests and by appointment. Enjoy over 70 varieties of hardy roses, lilies too. See B&B listing page 93, and Cottage listing page 96.

BIDEFORD D-4
BIDEFORD PARSONAGE
MUSEUM - A PEI COMMUNITY
MUSEUM



831-3133; off season 831-2817

fax 831-2817

bpm.bideford@pei.sympatico.ca

7 Bideford Rd. on Rte 166. West

Country Historical Society Inc. Triple

theme: Shipbuilding era; Parsons

and their contribution to the

community; Residency of author

L.M. Montgomery. "Wednesday

Evening with L.M. Montgomery"

during July and August. Annual

strawberry social July 23rd. Open

June-Sept, daily, 9 am-5 pm. \$4 adults,

\$2 students, \$10 family.

CAP-EGMONT F-4
THE BOTTLE HOUSES/
MAISONS DE BOUTEILLES



854-2987; off season 854-2254

info@bottlehouses.com

www.bottlehouses.com

Cap-Egmont, Rte 11. 26th season!

Walk through three fantasy-like buildings made of 25,000 varicoloured glass bottles. Admire the symphony of light and colour within. Photograph our 13-foot giant bottle, smell our wild roses, wander through our impressive flower gardens. *Attractions Canada* 2001 provincial winner: "Outdoor developed site." Featured in *Ripley's Believe It or Not!* and *1000 Places to See Before You Die*. Open June 1-Sept 30, daily. June and Sept, 10 am-6 pm; July and Aug, 9 am-8 pm. \$5 adults, \$4.50 seniors and students, \$2 children 6-16, under 6 free. Group rates available (15 or more). Box 53, Wellington RR3, COB 2E0.

GLENWOOD E-2
PIONEER FARM



859-2228

pioneerfarm@pei.sympatico.ca

www.pioneerfarm.ca

Judy Bertling, O'Leary RR2, COB

1V0. Panoramic woodland and

seascape farm, exclusively

powered by wind/solar. Self-

guided tour showcases renewable

energy, diversity of petting farm

animals, wagon/sleigh rides,

picnic/play area. Vacation cottage

available. Open year round. July and

Aug, Sun and Mon, 1-5 pm; other

times by reservation. \$5/person.

MIMINEGASH C-2
SEAWEED PIE CAFÉ & IRISH
MOSS INTERPRETIVE CENTRE



882-4313

Rte 14 (North Cape Coastal Drive).

Owned and operated by Women in

Support of Fishing. Come in and

explore our interpretive centre.

Learn all there is to know about

Irish moss through displays and

video. Gift shop. Come into our

café and enjoy our delicious

seafood chowder, fish cakes and

homemade beans, mussels and

much more. Children's menu.

Don't forget our famous "seaweed

pie." Open June 6-Sept 23, daily,

10 am-7 pm (Café opens at 11 am).

\$2 adults, \$1 seniors and children 12

and under, preschoolers free.

MISCOUCHE E-5
ACADIAN MUSEUM/
MUSÉE ACADIEN



432-2880; fax 432-2884

musee_acadien@gov.pe.ca

www.peimuseum.com

On Rte 2, west of Summerside.

Discover the fascinating odyssey of the Acadians of Prince Edward Island from 1720 to present. View an interpretive video highly rated by our visitors. Visit our exhibit *The Island Acadians: The Story of a People* and also our exhibit showcasing the multifaceted aspects of Acadian arts and culture. Acadian genealogical research, gift shop and heritage walking trail on site. Open year round. Admission charged May-Oct.

MONT-CARMEL F-4
ÉGLISE NOTRE-DAME-DU-
MONT-CARMEL CHURCH



854-2208

eglise.mont-carmel@teleco.org

http://sites.ipe.gazel.ca/eglisedem

ontcarmel

Located on Rte 11. Box 90, Wellington

RR2, COB 2E0. Open July 1-Aug 31,

10 am-6 pm. Free admission,

donations accepted.

NORTH CAPE A-2
NORTH CAPE, NATURE AND
TECHNOLOGY IN PERFECT
HARMONY



882-2991/3535; fax 882-3144

anne@tignish.com

North end of Rte 12. Witness the

meeting of the waters as the

Gulf of St. Lawrence and the

Northumberland Strait converge

over the longest natural rock reef in

North America. Great site to watch

seals. Walk the Black Marsh Nature

Trail, view the gigantic windmills

and learn all about the generation

of wind energy in our newly

expanded North Cape Interpretive

Centre. Enjoy the panoramic ocean

view from the air-conditioned

Wind & Reef Restaurant, and pick

up that perfect souvenir in our gift

shop which features a large

selection of Island crafts! Motor

coach parking available. Open mid-

May to mid-Oct, seven days a week.



www.regionevangeline.com
Centre Expo-Festival 902 854-3300



FULL COURSE LOBSTER MEAL UNDER \$19.*

ADD AN ADDITIONAL LOBSTER FOR ONLY \$7.*

*THIS OFFER IS AVAILABLE DURING LOBSTER FISHING SEASON FROM MAY 1st TO JUNE 30th AND AUGUST 10th TO OCTOBER 10th.




CENTRE EXPO-FESTIVAL IN ABRAM-VILLAGE, HUB OF THE ÉVANGÉLINE REGION ON THE NORTH CAPE COASTAL DRIVE.



O'LEARY D-2 PRINCE EDWARD ISLAND POTATO MUSEUM

859-2039 
info@peipotatomuseum.com
www.peipotatomuseum.com
 1 Dewar Lane, off Parkview Ave. Box 602, O'Leary, C0B 1V0. Visit this self-guided museum and learn about the history and culture of the potato through various displays and interactive terminals. The Prince Edward Island Potato Museum interpretive centre offers a bilingual storyline with photographs, artifacts and graphics, telling about the potato. Large collection of antique machinery, gift shop with potato theme. View the "giant sculptured potato" at the entrance. Other attractions: community museum, heritage chapel, log barn housing farm implements and machinery, one-room schoolhouse, restored telephone switchboard office. Group/bus rate, \$3/person (includes all attractions in the complex). GST not included. Open May 15-Oct 15. Mon-Sat, 9 am-5 pm; Sun, 1-5 pm. \$5/person, \$12/family (parents or guardians/children under 16 only).

QUILT GALLERY AND FABRIC CRAFTS 'N MORE


 859-1888; toll free 1-800-889-2606
info@quiltgallerypei.com
www.quiltgallerypei.com
 Rte 142, lower level of Guardian Drug Complex, 536 Main St., O'Leary. One

of the largest selections of locally made quilts and fabrics in Eastern Canada. Our quilts, from \$300 to \$3,000, can be shipped worldwide. Large selection of books, notions and over 2000 bolts of 100% cotton prints at 25% off regular price (meter cuts). Also yarns, stained glass, scrapbooking, cross stitch, etc. Fabrics and crafts supplies year round. Quilt gallery open May 1-Oct 15, nights, and Sun 1-4 pm.

PORT HILL D-5 GREEN PARK SHIPBUILDING MUSEUM & HISTORIC YEO HOUSE





831-7947; off season 368-6600
 fax 368-6608
green_park@gov.pe.ca
www.peimuseum.com
 Port Hill, Rte 12, west of Summerside. In Green Park Provincial Park. Trace the history of the once mighty shipbuilding industry and glimpse a bygone era through the restored Victorian rooms of the Historic Yeo House. Green Park was the home and site of a shipyard owned and operated by James Yeo of what is

considered the richest and most influential family in the colony. Explore the Island's shipbuilding industry during its golden age. Open June-Sept. Admission charged.

SUMMERSIDE AREA E-6 THE COLLEGE OF PIPING AND CELTIC PERFORMING ARTS OF CANADA





436-5377; toll free 1-877-BAGPIPE
info@collegeofpiping.com
www.collegeofpiping.com
 (Summerside). 619 Water St. East, C1N 4H8. 100% Authentic - Heartfelt Celtic! The College of Piping is the only year-round institution/concert production house of its kind in North America. Instruction and performances in bagpiping, highland dancing, step dancing and drumming. "Behind the Scenes" daytime tours and interactive exhibit Monday through Friday, 11 am-4 pm (July and August). An all-new mainstage production, *Highland Storm*, Tuesday to Thursday, 7:30 pm (July 4-August 31).

EPTEK ART & CULTURE CENTRE





888-8373; fax 888-8375
epetek@gov.pe.ca
www.peimuseum.com
 (Summerside). Waterfront Properties (adjacent to the Harbourfront Jubilee Theatre). Eptek Art & Culture Centre offers a diverse array of exhibits and programs featuring heritage, history, visual art and crafts. These exhibits of local and national interest provide glimpses into a rich culture that Islanders and visitors alike are sure to find rewarding. The gift shop offers an eclectic mix of Island art and crafts. Groups welcome. Open year round. Admission charged.

INTERNATIONAL FOX MUSEUM AND HALL OF FAME INC.



436-2400; off season 432-1296
info@wyattheritage.com
www.isn.net/~cmapei/ifax/
 (Summerside). 33 Summer St. Located in the historic Armoury Building. Discover how PEI became the birthplace of a worldwide

The College of Piping and Celtic Performing Arts of Canada presents

HIGHLAND STORM™

The Force of the Gaels



An ALL NEW Highland Storm
 Tuesday to Thursday Nights
 July and August

See BEHIND THE SCENES
 at the College of Piping
 Monday to Friday 11 A.M. to 4 P.M.

Box Office: 1-877-436-5377
 619 Water Street East
 Summerside



industry with high stakes and high fashion. The silver fox fur industry brought economic prosperity to Summerside that can still be seen in its architecture. *Open June-Sept. Mon-Sat, 10 am-5 pm. Off-season tours by appointment, call 432-1296.*

MACKAY'S PAINTBALL

🏠 🌳 🌲

888-2307
(Lower New Annan). Located at 1504 Barbara Weit Rd., Rte 180, just off Rte 2. James & Laurie-Anne MacKay, Lower New Annan, Summerside RR2, C1N 4J8. Netted-off spectator area; multi-playing level; night games; Sundays, walk on until 4 pm. "No group too big/ too small, we accommodate all." Come, take a shot at MacKay's Paintball. *Open year round, evenings and weekends. Call for reservations.*

PEI SPORTS HALL OF FAME & MUSEUM

🏠 🌳 🌲

436-0423; fax 436-0960
beauvs@pei.sympatico.ca
www.peisportshalloffame.com (Summerside). 124 Harbour Dr., Summerside. Chris Beauvais (executive director), Box 1523, Summerside, C1N 4K4. Located in the Wyatt Centre on Summerside's beautiful waterfront, this facility pays tribute to those athletes and builders of sport who have brought special honour to the province of PEI. *Open June-Sept, 10 am-6 pm. Oct-May by appointment. Admission by donation.*

SPINNAKERS' LANDING

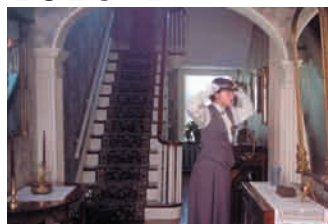
🏠 🌳 🌲



436-6692
www.summersidewaterfront.com/spinnakers (Summerside). Waterfront Properties. Spinnakers' Landing is one of Summerside's great marketplaces. A potpourri of giftware, crafts, fine retail outlets, antiques, and great food await you. Come to our PEI Official Welcome Centre and talk to our friendly staff about the area and events. Climb to the top of our Lighthouse and enjoy a breathtaking panoramic view of Summerside Harbour. Enjoy our children's playground and picnic area or grab a bite at the Pub and Eatery. Treat yourself to an ice cream while enjoying free Maritime entertainment. Ample free parking. *Open early June to late Sept, seven days a week. Free admission.*

WYATT HERITAGE PROPERTIES

🏠 🌳 🌲



432-1327; fax 432-1328
info@wyattheritage.com
www.wyattheritage.com (Summerside). Nestled in historic downtown Summerside, the properties feature MacNaught History Centre and Archives, the Wyatt Historic House and Lefurgey Cultural Centre. For those wishing to explore their family roots, MacNaught has many genealogical and historic resources readily available. Nearby, enjoy an entertaining, guided interpretive tour of the 1867 Wyatt Historic House - home of distinguished Prince Edward Island citizen, the late Dr. Wanda Wyatt. Next door awaiting your visit is the residence of 19th century shipbuilder John Lefurgey, now a centre dedicated to the practice of traditional arts and crafts. *Gift shop open year round; Cecelia's Tea Room, seasonal.*

UNION CORNER F-5 UNION CORNER SCHOOL HOUSE MUSEUM

🏠 🌳 🌲



854-2992
www.unioncornerschoolhouse.ca Rte 11, 20 km west of Summerside. Wellington RR2, C0B 2E0. *Open mid-June to Labour Day, daily, 9 am-5 pm. \$3 adults, \$2.50 seniors, \$2 students.*

WEST POINT E-2 WEST POINT LIGHTHOUSE INN, RESTAURANT & MUSEUM

🏠 🌳 🌲



859-3605; fax 859-1510
toll free 1-800-764-6854
wplight@isn.net
www.westpointlighthouse.com Rte 14 and Cedar Dunes Park Rd. Experience the thrill of climbing into the lantern deck at the top of PEI's tallest functioning lighthouse. Photos and artifacts entertain as you climb to the top

for a breathtaking view. Stay in one of nine guest rooms decorated in the era of the Lightkeeper. Join us for a traditional "home-cooked" meal prepared by direct descendants of the lightkeepers of old. *Open May 28-Sept 30.*

WOODSTOCK D-2 MILL RIVER FUN PARK

🏠 🌳 🌲



859-3915; off season 859-8790
fax 859-8779/8765 (winter)
38016 Western Rd., Rte 2. PEI Provincial Parks, O'Leary RR3, C0B 1V0. The Fun Park is worth a visit, with activities for the entire family - toddlers and up. Attractions include a swimming pool, sea of balls, bumper boats, pirate ship, kiddies' pool with waterslides, giant twister slide and the Aqua Rage. Admission includes all activities in the park. Group rates on request. Advance notice preferred for large groups. *Open mid-June to Labour Day, daily, 11 am-7 pm. \$7/person, children 5 and under free.*

RODD SPA BOUTIQUE AT MILL RIVER

🏠 🌳 🌲



859-3142
rodd@roddhotelsandresorts.com
www.roddhotelsandresorts.com Located at Rodd Mill River Resort - A Rodd Signature Resort. Relax and unwind at Rodd Spa Boutique at Mill River. Our professional spa services are delivered using the Aveda product line and include

aromatic massage, body wraps and polishes, facials, hand and foot care, make-up applications, and much more. *Open mid-May to mid-Oct.*

CRAFT & GIFT SHOPS

ABRAM-VILLAGE F-4

LA CO-OP D'ARTISANAT
D'ABRAM-VILLAGE/ABRAM-
VILLAGE HANDCRAFT CO-OP LTD.

🏠 🌳 🌲

854-2096
In Abram-Village, rtes 124 and 165. Pres. Eliza Gallant. 27 km west of Summerside. Locally made crafts, weaving, quilts, rugs, Acadian shirts, woodwork, pottery, and a mini-museum. Open June 12-Sept 30. Mon-Sat, 9:30 am-6 pm.

BLOOMFIELD C-2

THE OLD MILL CRAFT COMPANY

🌳

859-3508; fax 859-1628
On Rte 2. Lois Ann MacAusland. Adjacent to MacAusland's Woollen Mill. Featuring gifts and crafts of traditional Island quality, including fine woollen items, weaving, sheepskins, hand-carved decoys, knitting, pottery, hand-hooked rugs, artwork and many other items of quality. Open July and Aug, daily, 9:30 am-6:30 pm; Sun, 12 noon-6 pm. June and Sept, Mon-Sat, 10 am-5 pm.

CENTRAL BEDEQUE F-6 BEDEQUE CRAFT CENTRE

🏠 🌳

887-3333
candbhogg@pei.sympatico.ca Located in the Wm. Callbeck Centre, 950 Callbeck St., off Rte 1A. 10 minutes from Confederation Bridge. Operated by Island artisans. Choose from a variety of pure PEI handcrafted items - wrought iron, soaps, quilts, stained glass, ceramics, jewellery, tole, wood, preserves, clothing, Island prints, paintings, country crafts, crochet. Displayed in a smoke-free environment. Largest centre of its kind in Atlantic Canada. Quality workmanship at affordable prices. *Open year round, daily, 10 am-5 pm. Extended hours during July and Aug.*

Open Daily
10 am - 5 pm

Open Year
Round

EST.
1899

Wm. CALLBECK CENTRE

Bedeque Craft Centre

• All Island made crafts • Largest of its kind in Atlantic Canada • Owned & operated by over 50 artisans • Extended Summer hours

• Visit our new "Gallery of Quilts"

Callbeck St. Central Bedeque 902-887-3333



LENNOX ISLAND D-5 INDIAN ART & CRAFT OF NORTH AMERICA

☎ ☎ ☎ ☎ ☎ ☎ ☎ ☎ ☎ ☎ ☎ ☎ ☎ ☎ ☎ ☎
831-2653
doreen.sark@pei.sympatico.ca
Rte 163, off Rte 12. Doreen M. Sark.
Lennox Island Reserve. Scenic shore
location overlooking beautiful
Malpeque Bay. The shop features
many examples of traditional and
non-traditional native crafts such
as beadwork, carvings, drums,
pipes, masks, pottery, rattles,
jewellery, headdresses, moccasins.
Also birch-bark novelty items,
books, prints, stationery, T-shirts,
dolls and sweetgrass. Specializing
in Mi'kmaq ash-splint baskets and
Micmac Productions pottery and
figurines. Free coffee for patrons.
Open mid-May to mid-Oct, Mon-Sat,
9 am-6 pm; Sun, 10 am-6 pm. Off
season by chance or appointment.

MONT-CARMEL F-4 BOUTIQUE-À-POINT

☎ ☎ ☎ ☎ ☎ ☎ ☎ ☎ ☎ ☎ ☎ ☎ ☎ ☎ ☎ ☎
854-2895
mariann.arsenault@summerside.ca
New location: 597 Cannontown Rd.,
Rte 165, Mont-Carmel. Marie Anne
Arsenault. Handmade clothing,
gifts, souvenirs, fabric, and custom
sewing. Open year round, Mon-Sat,
9 am-5 pm. Open Sun during July
and Aug.

NORTH BEDEQUE E-6 PERIWINKLE BEARS

436-6278 ☎ ☎ ☎ ☎ ☎ ☎ ☎ ☎ ☎ ☎ ☎ ☎ ☎ ☎ ☎ ☎
nan@periwinklebears.ca
www.periwinklebears.ca
On Schurman's Point Rd. Nancy Cole
& John Perry, Box 4502, Summerside,
C1N 4J9. Each one-of-a-kind
Periwinkle Bear is handmade from
exotic fibres woven at Periwinkle
Studio. We also design custom
bears from your sentimental fabric
and photos. We ship worldwide.
Open year round by chance or
appointment. June 24-Sept 30, daily,
10 am-5 pm.

THOMPSON'S WOODCRAFT

887-3459 ☎ ☎ ☎ ☎ ☎ ☎ ☎ ☎ ☎ ☎ ☎ ☎ ☎ ☎ ☎ ☎
thompsons.woodcraft@pei.sympa-
tico.ca
On Rte 1A. Wilfred Thompson.
Quality woodenware, varieties of
salad bowls, serving plates, lazy
susans, candleholders, clocks,
lamps and mirrors. Open year round.
May 29-Oct 31, Mon-Sat, 9 am-5 pm.
Sunday and off-season by chance or
appointment.

RICHMOND E-4 BASKET WEAVERS OF PEI CO-OP

854-3063/831-2484 ☎ ☎ ☎ ☎ ☎ ☎ ☎ ☎ ☎ ☎ ☎ ☎ ☎ ☎ ☎ ☎
tommycod@pei.sympatico.ca
www.sun-sea.pe.ca
Ann McIsaac. 17 Sunnyside Rd.,
Richmond, C0B 1Y0. Ash-splint
basket weaving and Island crafts.
Basket workshops. Open June 1-
Sept 30. June 1-Sept 2, Mon-Sat, 9 am-
5 pm; Sept 3-30, Mon-Fri, 9 am-4 pm.

SUMMERSIDE AREA E-6 THE COLLEGE OF PIPING CELTIC GIFT SHOP

☎ ☎ ☎ ☎ ☎ ☎ ☎ ☎ ☎ ☎ ☎ ☎ ☎ ☎ ☎ ☎
436-5377; toll free 1-877-BAGPIPE
info@collegeofpiping.com
www.collegeofpiping.com
(Summerside). 619 Water St. E.,
Summerside, C1N 4H8. The College
of Piping. 100% Authentic -
Heartfelt Celtic! Our educational
and entertainment programs are
complemented by a Celtic store
offering a wide selection of music,
books, jewellery, Highland
supplies, instruments, tartans
and clan items. Open year round.

ISLAND BEAD CO.

☎ ☎ ☎ ☎ ☎ ☎ ☎ ☎ ☎ ☎ ☎ ☎ ☎ ☎ ☎ ☎
888-2547
info@islandbeadco.com
www.islandbeadco.com
(Summerside). Brenda Lea Noland,
150 Harbour Dr., Summerside, C1N
5Y8. Visit our new interactive shop
featuring handcrafted goods by
over 40 Island artisans. Made-in-
PEI products include custom-made
jewellery. Lines of wire-wrapped
sea glass, genuine gemstones and
sterling silver. Beads, candles,
pottery, quilts, fabric art, Island
photography, wrought iron,
sculptures, paintings and more.
Come for a class or a bead party at
our bead bar. Open mid-June to mid-
Sept. Hours of operation same as
Spinnakers' Landing.

LOYALIST CRAFT NOOK

☎ ☎ ☎ ☎ ☎ ☎ ☎ ☎ ☎ ☎ ☎ ☎ ☎ ☎ ☎ ☎
436-3333; fax 436-4304
toll free 1-877-355-3500
www.lakeviewhotels.com
(Summerside). Loyalist Lakeview
Resort, 195 Harbour Dr. Greta Pike.
Featuring a wide selection of
quality crafts and gifts. Open year
round.

MALPEQUE FINE IRON PRODUCTS

☎ ☎ ☎ ☎ ☎ ☎ ☎ ☎ ☎ ☎ ☎ ☎ ☎ ☎ ☎ ☎
436-5006; fax 436-5006
toll free 1-866-436-5006
info@malpequefineiron.com
www.malpequefineiron.com
(Lower New Annan). 1209 Barbara
Weit Rd., Rte 180. In our shop we
creatively hand-forge wrought-
iron products for the home, cottage
and garden. Some items include
pot racks, lamps, chandeliers,
candleholders, flower cages, trellis
and plant hangers. One-of-a-kind
folk art garden pieces. Open year
round. Mon-Fri, 8 am-4:30 pm; Sat,
8:30 am-1 pm; or by appointment.

TIGNISH AREA B-2 TIGNISH TREASURES GIFT SHOP/ HOLIDAY ISLAND PRODUCTIONS

☎ ☎ ☎ ☎ ☎ ☎ ☎ ☎ ☎ ☎ ☎ ☎ ☎ ☎ ☎ ☎
882-2896; fax 882-3144
treasures@tignish.com
www.tignishtreasures.com
(Tignish). Box 398, School St.,
Tignish, C0B 2B0. Producers of high-
quality collectable Island souvenirs.
Products include handmade
seaweed soap, sea-splash body
lotion, bath salts, and bath fizzies
made on location with PEI Irish
Moss! Tours of production studio
and demonstrations. Open June-Sept.

WEST POINT E-2 WEST POINT LIGHTHOUSE CRAFT SHOP

859-3742 ☎ ☎ ☎ ☎ ☎ ☎ ☎ ☎ ☎ ☎ ☎ ☎ ☎ ☎ ☎ ☎
364 Cedar Dunes Park Rd., off Rte 14.
Betty Boyles. Locally made crafts.
Open June 1 to early Oct. July 1-
Sept 1, daily, 9 am-9 pm. June, Sept
and Oct, 10 am-6 pm.

• CYCLING •

ST. EDWARD B-2 PAUL'S BIKE SHOP

882-3750 ☎ ☎ ☎ ☎ ☎ ☎ ☎ ☎ ☎ ☎ ☎ ☎ ☎ ☎ ☎ ☎
Off Rte 152. Paul Dalton, 104 Chaisson
Rd., St. Edward, C0B 1Z0. Sales,
service, repairs, tune-ups, parts,
accessories and rentals. Open year
round.

• DINING •

ABRAM-VILLAGE F-4 CENTRE EXPO-FESTIVAL CENTRE

854-3300 ☎ ☎ ☎ ☎ ☎ ☎ ☎ ☎ ☎ ☎ ☎ ☎ ☎ ☎ ☎ ☎
Rte 124. Special events centre
where you can taste our Acadian
culture with lobster suppers.
Group rates available by
reservation. Meetings, conferences,
weddings, concerts, dance hall,
catering services also available.

NORTHPORT C-3 THE PIER RESTAURANT

☎ ☎ ☎ ☎ ☎ ☎ ☎ ☎ ☎ ☎ ☎ ☎ ☎ ☎ ☎ ☎
853-4510
restaurant@northportpier.ca
www.northportpier.ca
Rte 152, Northport. An original boat
shop on the waterfront houses The
Pier Restaurant, where fresh seafood
and locally inspired cuisine is
served daily. Enjoy an amazing view
of Northport Harbour where scores
of blue heron grace the shoreline.
Air-conditioned dining in a casual
atmosphere with a view of the water
from every table, or enjoy your meal
on our outdoor patio. Children's
menu, groups and bus tours
welcome. Open June 1-Sept 24, daily.



Spend a Day on Lennox Island!
Fun for the Entire Family!

LENNOX ISLAND
ABORIGINAL ECOTOURISM

Bike
Walk
Kayak
Crafts
History
Culture
Boat Tours
Mi'kmaq Food

**LEARN,
SHARE,
EXPLORE!**

1-866-831-2702 www.lennoxisland.com/liac



**SUMMERSIDE AREA E-6
BROTHERS TWO RESTAURANT**

436-9654

sbel@pei.aibn.com

www.brotherstwo.ca

(Summerside). Water St. East.

Summerside's first choice for fresh Island seafood and steak for over 35 years! Enjoy fresh lobster suppers, succulent mussels and savory seafood, delicious steaks, chicken and pasta, gourmet pizzas and flatbreads, divine desserts, handcrafted microbrew beer, and a kids' menu. Fully licensed. Also hosts Feast Dinner Theatres, Atlantic Canada's longest running dinner-theatre, for non-stop music, laughs and loads of fun! *Open year round.*

CROWN AND ANCHOR TAVERN

436-3333

www.lakeviewhotels.com

(Summerside). Loyalist Lakeview Resort, 195 Harbour Dr. English-style tavern with full menu. Lunch and dinner specials. *Open year round. Lunch, 11 am-5 pm; dinner, 5-10 pm. Open to family dining until 8 pm.*

GENTLEMAN JIM'S

888-2647; fax 436-1959

(Summerside). 480 Granville St.

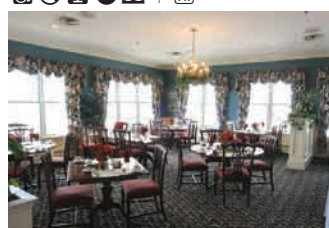
Owned and operated by the Cameron family and serving customers for over 35 years. Featuring char-broiled steaks, Island seafood and award-winning seafood chowder. Great service, low prices. *Open year round.*

O'RYAN'S PUB AND EATERY

436-9919

casadepasta@hotmail.com

(Summerside). Located in the Nu-City Plaza. Jeff Aiken, 674 Water St., C1N 4J1. 2005 "People's Choice Award" winner. Eat where the locals eat. Excellent food, great service and reasonable prices, that's what makes us number one. Full menu includes over 90 selections, from steak and burgers to pasta and seafood. Children's menu available. Family-owned and -operated. Once you've tried us, you're sure to come back. Home of the "Onion Blossom." *Open year round, daily at 11 am.*

PRINCE WILLIAM DINING ROOM

436-3333; fax 436-4304

www.lakeviewhotels.com

(Summerside). Loyalist Lakeview Resort, 195 Harbour Dr. Licensed, featuring innovative menu specializing in seafood, steaks, Island delicacies. *Open year round.*

**TIGNISH AREA B-2
ROYAL CANADIAN LEGION,
BRANCH #6**

882-2011; fax 882-2849

tignishlegion@pei.aibn.com

(Tignish). Located at 221 Phillip St. Home-style meals in a relaxed atmosphere. Catering to banquets. *Open mid-June to Sept 30, Mon-Sat, 11 am-2:30 pm.*

**TYNE VALLEY D-4
DOCTOR'S INN**

831-3057

doctorsinn@pei.sympatico.ca

www.peisland.com/doctorsinn

Rte 167. The season dictates what we serve as it has to be as fresh as we can grow it, from asparagus in May to winter squash in October and creamy soups in winter. We put our organic vegetables in front of everything else. By reservation only for up to six. Recommended in *Where to Eat In Canada* (one star), and *Frommer's Canada*. MC, V accepted. *Open year round.*

**THE LANDING: OYSTER
HOUSE & PUB**

831-3138

info@oysterhouse.ca

www.oysterhouse.ca

Box 12, Tyne Valley, COB 2C0. Voted the best pub on PEI. Featured in numerous independent publications. A sure bet for great atmosphere, great food and Island hospitality for the whole family. Located in the heart of the charming village of Tyne Valley - "the quintessential Island hamlet." Our menu features fresh shellfish including Malpeque oysters, quahogs and mussels, but has something for everyone. Enjoy fresh Island draught beer. Live music on Saturdays. Experience a vibrant Island community and its culture. Family-owned and -operated. Make The Landing the focal point of your visit to the region - you will not be disappointed! *Open May 16-Oct 31. July and Aug, daily at 3 pm; May, June, Sept-Oct 9, daily except Mon, 3 pm; Oct 10-31, Fri-Sun.*

**WEST POINT E-2
WEST POINT LIGHTHOUSE INN,
RESTAURANT & MUSEUM**859-3605; fax 859-1510
toll free 1-800-764-6854

wplight@isn.net

www.westpointlighthouse.com

Rte 14 and Cedar Dunes Park Rd. Full-service family dining at its best. Seafood is our specialty, but we have something for everyone. Vegetarian, children's and seniors' dishes. Mouthwatering chowder. Lobster fresh from the wharf. Enjoy a delicious meal in our seaside restaurant or patio. Our core staff are direct descendants of the only two lightkeepers who served during the 90 years before automation! Dine with us for a unique historical and cultural experience! *Open May 28-Sept 30.*

**WOODSTOCK D-2
HERNEWOOD DINING ROOM**

859-3555

rodd@roddhotelsandresorts.com
Rodd Mill River Resort, Rte 136. Full à la carte menu specializing in fresh Island cuisine. Overlooking the Mill River Golf Course. Patio dining. Open for breakfast, lunch, dinner, and Sunday brunch. *Seasonal.*

**ST-FELIX B-3
ST-FELIX GOLF & COUNTRY
CLUB LTD.**

882-2328; fax 882-3908

toll free 1-877-311-2328

stfelixgolf@pei.sympatico.ca

www.stfelixgolf.ca/

1020 Greenmount Rd. (Rte 153). Claude Gaudette, Box 265, Tignish, COB 2B0. The Island's best-kept secret. Designed by world-renowned architect Graham Cooke and Associates. 3 km from beautiful beach area, close to lovely cottages, inn, bed & breakfasts and restaurants. We have a short game practice range in full operation. 135 yd. from tee to green. Also sand bunker next to the green for chipping. *Open May 1-Oct 31. Green fees (in 2005): 9 holes, \$21; 18 holes, \$30. All taxes included.*

**SUMMERSIDE AREA E-6
SUMMERSIDE GOLF AND
COUNTRY CLUB**

(18-hole, par 72)

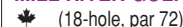


436-2505; toll free 1-877-505-2505

sgc@auracom.com

www.summersidegolf.com

(Summerside). Rte 11, Linkletter Rd. Golf Summerside - Best value on PEI. Just five minutes west of downtown Summerside. 18-hole championship golf course (5700-6500 yd.) with modern clubhouse, golf shop and licensed restaurant/lounge and course canteen facilities. Great course for all levels of golfers. Cart (power and pull) and club rentals available. Visitors welcome. Advance booking of tee time permitted by reservation. *Open May-Oct. Green fees: \$29-45. 9-hole rates available.*

**WOODSTOCK D-2
MILL RIVER GOLF COURSE**

(18-hole, par 72)
toll free 1-800-235-8909 (for reservations)

www.golflinkspei.com

Golf Digest Places to Play - ★★★★★
"Challenging and pretty." This mature-forest championship course offers the discerning golfer 18 different memories. Rolling fairways, well-bunkered greens, subtle elevation changes and numerous lakes and streams make each hole a new challenge, regardless of your handicap level. Golfers Choice awards for best value and best service. Resort/Conference Centre with Aquaplex located on-site.

• HUNTING •**MURRAY ROAD C-4
WAGNER'S COTTAGES AND
OUTFITTERS**

831-3079; fax 831-3079

eric@wagnerscottage.com

www.wagnerscottage.com

On Rte 174. Guided goose/duck hunting in fields/salt marshes. Accommodations included. *Open Oct-Dec.*

**SPRINGHILL E-4
SPUD ISLANDER OUTFITTERS**

831-3212; toll free 1-800-298-3270

info@spudislanderoutfitters.com

www.spudislanderoutfitters.com

David Ford & Lloyd Phillips, Tyne Valley RR2, COB 2C0.

Professionally guided three-day goose- and duck-hunting packages. *Open Oct 1-Dec.*



• OUTDOOR ADVENTURE •

**ALBERTON C-3
SANDHILLS AND RIVER TOURS**

853-2518; toll free 1-888-272-2246
(for information and reservations)
rivertours@briarwood.pe.ca
www.briarwood.pe.ca
253 Matthews Lane, off Rte 12 near
Alberton. Gary Inman. **NOTE:**
Transport Canada Marine Safety
Inspection and Certification
pending. Enjoy unspoiled natural
beauty as we sail to the sandhills
along the north shore, accessible
only by boat. Walk the beach or
picnic by the dunes in view of
lighthouse. A bird watcher's
delight! View the largest colony of
blue heron on PEI. Our pontoon
boat seats 10 comfortably. Great for
special-event parties. Group rates
available. A unique experience.
Open May-Oct. \$25/person, children
under 12 free.

**MURRAY ROAD C-4
WAGNER'S OUTDOOR
ADVENTURE**

831-3079
www.3pei.sympatico.ca/~eric.wa
gner
Rte 174. Eric Wagner, Ellerslie RR2,
C0B 1J0. Canoe and kayak rentals.
Open July 1-Sept 1 or by reservation.

• SHOPPING •

**CENTRAL BEDEQUE F-6
BARGAIN FABRIC OUTLET**

831-3079
Toll free 1-877-887-2189
Located in the Wm. Callbeck Centre,
950 Callbeck St., off Rte 1A on Rte
171. 15,000 sq. ft. of fabric, "sew"
elegant, "sew" affordable. Quilting
and crafting fabrics, decorative
and upholstery. Over one third of a
million metres at tremendous
prices. "It's always worth the
drive." Open year round, Mon-Thurs
and Sat, 9 am-5 pm; Fri, 9 am-8 pm.

**"Where High Quality
Meets Low Price!"**

Beautiful fabrics at tremendous
savings. Great selection for all your
quilting, crafting, upholstery, or
home decor needs.

Open year round, Monday to Saturday,
9am - 5pm, Friday 9am - 8pm.

**BARGAIN
FABRIC
OUTLET**
-Est. 1993-

Bedeque, PEI Toll Free 1 877 887-2189



• THEATRE •

**MONT-CARMEL F-4
LA CUISINE À MÉMÉ**

854-3321
info@regionevangeline.com
www.regionevangeline.com
Truly an unforgettable and
enjoyable Acadian experience, La
Cuisine à Mémé dinner-theatre
provides a 22nd season of joie de
vivre, complete with comedy,
energetic music and splendid food!
Reservations required. July and
Aug, 6:30 pm. Group rates.

**SUMMERSIDE AREA E-6
FEAST DINNER THEATRES -
SUMMERSIDE**

888-2200; toll free 1-888-748-1010
brother2@pei.aibn.com
www.feastdinnertheatres.ca
(Summerside). 618 Water St. East.
Atlantic Canada's longest running
dinner-theatre... celebrating its 28th
spectacular season! Join us for a
great performance featuring
musical comedy and improv, a
fabulous four-course meal, and
loads of laughs and fun. Come see
what makes the Feast Dinner-
Theatre a must-see on PEI! Phone
for reservations and ticket
information. Group discounts
available. Seasonal, Mon-Sat. Doors
open at 6:30 pm.



**HARBOURFRONT JUBILEE
THEATRE**



888-2500; fax 888-4468
toll free 1-800-708-6505
mgallant@jubileetheatre.com
www.jubileetheatre.com
(Summerside). 124 Harbour Dr.,
Summerside, C1N 5Y8. Located on
the waterfront, this 520-seat
professional theatre celebrates
10 years of dramatic and musical
productions. "Summer on the
Waterfront Festival 2006" showcases
the region's finest talent - from
theatrical comedy to traditional
Maritime folk favourites; from
smooth, soulful jazz and blues to
energetic pop; and the richness of
our Acadian and Aboriginal
cultures. Open year round.

**TIGNISH AREA B-2
V'NEZ CHOU NOUS ACADIAN
DINNER THEATRE**

882-0475; fax 882-0482
seperrey@seperrey.org
www.seperrey.org
(Palmer Road). An Acadian French
dinner-theatre not to be missed!
Based on local characters, this play
boasts a funny, entertaining
storyline with lively song and
dance, both original and
traditional. Great Acadian food!
Open mid-July to mid-Aug by
reservation only.

• VISITOR INFORMATION •

**MOUNT PLEASANT D-4
WEST PRINCE VISITOR
INFORMATION CENTRE**



831-7930; off season 368-4444
fax 831-7928
toll free 1-888-PEI-PLAY
vicportage@gov.pe.ca
www.peiplay.com
On Rte 2 West. As you continue
your tour of North Cape Coastal
Drive, be sure to drop in. Our
friendly, knowledgeable staff is
waiting to help you plan an
adventure filled with excitement,
history and breathtaking beauty.
Open June to Oct.

**SUMMERSIDE AREA E-6
SUMMERSIDE VISITOR
INFORMATION CENTRE**



888-8364; off season 368-4444
fax 888-8377
toll free 1-888-PEI-PLAY
vicsummerside@gov.pe.ca
www.peiplay.com
(Summerside). Located in downtown
Summerside. At the gateway to the
North Cape Coastal Drive, Travel
Counsellors are waiting to
welcome you and prepare you for
a journey through a region where
culture colours the landscape.
Here you can gather extensive
information on activities,
attractions, accommodations, etc.
We will be pleased to help make
your stay a memorable one. Open
mid-May to mid-Oct.

• CAMPING •

**CAP-EGMONT F-4
MOONLIGHT CAMPING/
AU CLAIR D'LA LUNE**



854-2746; off season 892-9705
Rte 11 (North Cape Coastal Drive).
Tim Mitchell, 18 Park Ave.,
Charlottetown, C1A 5X6. 30 km
from Summerside in La Région
Évangéline. Campers' store, ice,
playground, laundromat, beach,
ice cream. Two camp cabins, \$45/
day. Reservations accepted. Open
May 15-Sept 30.
Campground - 14 acres. 7 flush
toilets. 6 hot showers. 50(u),
50(3w). Daily \$17.50(u),
\$19.50(3w). \$2 add'l person (over 4
persons).
Camp Cabin - 2 o/n units. Daily
\$45(2), \$4 add'l person. Weekly
\$300(2), \$4 add'l person.

**KILDARE CAPES B-3
JACQUES CARTIER
PROVINCIAL PARK**



853-8632; off season 859-8790
Off Rte 12. Parks Division West,
O'Leary RR3, C0B 1V0. Located
5 km east of Alberton. Park
recreation and interpretive
programs with evening activities.
Ocean beach with lifeguard,
laundromat, kitchen shelter,
dumping station and canteen.
Campers' store, 5 km. Leashed
pets permitted. Services may vary
in June and Sept. Reservations
accepted after April 1. Interac, MC,
V accepted. Open June-Sept.
Campground - 22 acres. 12 flush
toilets. 6 hot showers. 40(u), 34(2w).
Daily \$21-22(u), \$24-25(2w).




PORT HILL D-5 GREEN PARK PROVINCIAL PARK

★★★(F) ★★(R)

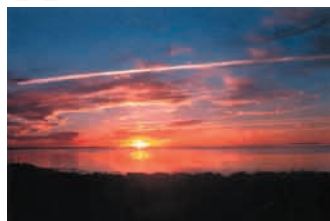


831-7912; off season 859-8790
On Rte 12. Parks Division West, Woodstock, O'Leary RR3, COB 1V0. 6 km east of Tyne Valley. Wooden shipbuilding display centre and museum, nature trail, mini golf, playground, river beach. Private wooded and river-front tent sites available. Camp cabins on site. Laundromat, kitchen shelter and dumping station. Campers' store, 6 km. Pets permitted on leash. Reservations accepted after April 1. Interac, MC, V accepted. Open June-Sept.

Campground - 219 acres. 8 flush toilets. 8 hot showers. 40(u), 18(3w). Daily \$21-22(u), \$27-28(3w).

SUMMERSIDE AREA E-6 CRYSTAL BEACH CAMPGROUND & COTTAGES

★★★(F) ★★(R)



436-4984/2140
toll free 1-877-433-2267 (for reservations only)
crystalbeach@cairnsotel.pe.ca
www.cairnsotel.pe.ca
(New Annan). Rte 180 in Lower New Annan. Aaron & Matthew Wedge, Summerside RR2, C1N 4J8. Beautifully situated on Malpeque Bay. Spectacular sunsets. Open, sheltered waterfront sites available, all paved roads (no dust), two laundromats, fire-rings, pull-throughs, firewood, ice. Mosquito-controlled. Campers' canteen/store, dumping station, clean washrooms, playground, heated outdoor pool. Security on premises. 2 km to bike trail. 15- to 30-amp hookups. Cottages available on campground with ocean view. Follow TransCanada Hwy. to Rte 1A west to Travellers Rest. Turn east on Rte 2. At approximately 3 km (2 mi.), turn left onto Rte 120 north. Follow the sign to the campground (Rte 180). Open May 20-Sept 30.

Campground - 27 acres. 30 flush toilets. 13 hot showers. 50(u), 65(2w), 85(3w). Daily \$19(u), \$23(2w), \$26(3w). \$2 add'l person. Rates are for two people. Children 12 and under stay free.

GREEN ACRES TRAILER PARK



436-3508; toll free 1-866-390-3508 (Summerside). Located on North Cape Coastal Drive, Rte 11. David & Barb Wedge, 115 Bayview Dr., Summerside, C1N 4A2. Open May 1-Nov 1.

Campground - 1 acre. 1 flush toilet. 1 hot shower. 7(3w). Daily \$18(3w).

LINKLETTER PROVINCIAL PARK

★★★(F) ★(R)



888-8366; off season 859-8790 (Linkletter). On Rte 11. Parks Division West, Woodstock, O'Leary RR3, COB 1V0. 8 km west of Summerside. Bay beach, playground equipment, laundromat, kitchen shelter and dumping station. Campers' store, 4 km. Pets permitted on leash. Reservations accepted after April 1. Interac, MC, V accepted. Open June-Sept.

Campground - 72 acres. 14 flush toilets. 8 hot showers. 51(u), 17(2w), 16(3w). Daily \$21-22(u), \$24-25(2w), \$27-28(3w).

TIGNISH AREA B-2 GULF SIDE CAMPGROUND



882-3262

(Seacow Pond). On Rte 12 West, north of Tignish. Albert Shea, Tignish RR4, COB 2B0. Open May-Oct 7.

Campground - 10 acres. 2 flush toilets. 2 hot showers. 12(u), 10(3w). Daily \$15(u), \$20(3w).

WATERFORD B-2 WATERFORD COTTAGES & CAMPGROUND

★★★(F) ★★(R)



882-2644; off season 853-4636
toll free 1-800-448-4912
curtislover@waterfordbeach.com
www.waterfordbeach.com
On Rte 14 (North Cape Coastal Drive). Curtis Oliver, Elmsdale RR2, COB 1K0. Open, pull-through and oceanside sites with 30- and 50-amp hook-ups. Secluded, sandy ocean beach, large pool, recreation hall with stage, nightly movies on big-screen TV, arcade, pool table, children's playground, horseshoes, footballs, basketballs, volleyballs available for sign-out, fire-pits,

laundromat. Cottages available. Interac, MC, V accepted. Open mid-June to mid-Sept.

Campground - 150 acres. 8 flush toilets. 8 hot showers. 4(u), 12(2w), 28(3w). Daily \$21(u), \$23(2w), \$25(3w). Weekly rates available.

WEST POINT E-2 CEDAR DUNES PROVINCIAL PARK

★★★(F) ★★(R)



859-8785; off season 859-8790
On Rte 14. Parks Division West, O'Leary RR3, COB 1V0. 24 km south of O'Leary. Ocean beach with lifeguard, park recreation and interpretive programs, nature trail, laundromat, kitchen shelter, dumping station. Loan-out recreation equipment. West Point Lighthouse on site. Reservations accepted after April 1. Interac, MC, V accepted. Open June-Sept.

Campground - 100 acres. 11 flush toilets. 8 hot showers. 20(u), 39(2w). Daily \$21-22(u), \$24-25(2w).

WOODSTOCK D-2 MILL RIVER PROVINCIAL PARK

★★★(F) ★★(R)



859-8786; off season 859-8790
On Rte 136. Parks Division West, O'Leary RR3, COB 1V0. Located 2 km north of Woodstock. Park recreation and interpretive programs, evening activities. 18-hole par 72 championship golf course (6500-yd., 5944 m). Canoe/kayaking, marina. Racquet and tennis courts (additional fees apply). Playgrounds, loan-out recreation equipment. Adjacent to Rodd Mill River Resort with licensed dining room and lounge, and to Mill River Fun Park. Kitchen shelter, laundromat, dumping station. Leashed pets permitted. Services may vary in June and Sept. Reservations accepted after April 1. Interac, MC, V accepted. Open May-Oct.

Campground - 75 acres. 8 flush toilets. 8 hot showers. 18(u), 18(2w), 36(3w). Daily \$21-22(u), \$24-25(2w), \$27-28(3w).

ACCOMMODATIONS

camp cabins

CAP-EGMONT F-4

MOONLIGHT CAMPING/ AU CLAIR D'LA LUNE

(See Camping, page 84)

PORT HILL D-5 WAVES ON GREEN PARK



831-7912; off season 859-8790
info@wavesonpei.com
www.wavesonpei.com

"Waves on Green Park," camp cabins located in Green Park Provincial Park, home of the Yeo House and Shipbuilding Museum. Located beside the beautiful Trout River on the Island's north shore. Each cozy cabin has three to four mattresses, table, chairs, picnic table, fire-pit. Park offers washroom, showers, laundry facilities, beach, playground, mini golf. Family and group rates. Open June-Sept.

Camp Cabin - 12 o/n units. Daily \$35(2), \$5 add'l person. Weekly \$225(2), \$35 add'l person. Children under 6 free.

ACCOMMODATIONS

hotels/motels/resorts

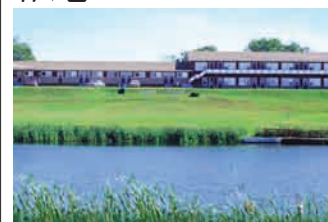
ALBERTON C-3 BRIARWOOD INN, COTTAGES AND LODGE

★★★(H/M)

(See Cottages, page 95)

TRAVELLERS INN MOTEL

★★(H/M)



853-2215; toll free 1-800-561-7829
accommodations@pei.sympatico.ca
www.virtuo.com/travellers/
On Rte 12 West, at entrance to Alberton. Angus & Rita MacCormack, Box 138, Alberton, COB 1B0. Telephones, colour cable TVs, air conditioning. Children's playground within walking distance. Golf course nearby. Beach, 3 km. Free continental buffet breakfast. AE, MC, V accepted. Open year round. Off-season rates Oct 1-May 31.

Motel - 14 o/n, 8 hsk units. 22B&S. Daily \$50-89(2), \$15 add'l person.



CENTRAL BEDEQUE F-6 MID ISLE MOTEL

★★★ (H/M)



887-2525; toll free 1-877-887-2525
reid@pei.sympatico.ca
www.midisle.ca
Rte 1A. David & Lynn Reid, Central Bedeque, COB 1G0. 13 km west of Borden-Carleton. "See the Isle from Mid Isle." Avoid the congestion, enjoy the country. Double and twin/double units, some queens. Cots, cribs and telephone available. TVs. Coffee shop serves breakfast and light lunches. Beach, 6 km. Executive beachview cottage. Laundry facilities, photocopy, fax and email services available. AE, DC, MC, V accepted. Open year round. Motel - 10 o/n, 10 hsk units. 20B&S. Daily \$59-79(1-2), \$7 add'l person.

SUMMERSIDE AREA E-6 BAKER'S LIGHTHOUSE MOTEL

★★★ (H/M)



436-2992; toll free 1-877-436-2996 (for reservations only)
bakersmotel@eastlink.ca
users.eastlink.ca/~bakersmotel (Summerside). Rte 11. The Bakers, 802 Water St., Summerside, C1N 4J6. Year-round operation. Senior rates available. Canada Select property. Overnight and housekeeping units. Large play area. Restaurant adjoining property. Near walking/hiking trail, shopping and beaches. Conveniently close to major attractions. Queen mattresses, air conditioning available. Fans, fridges, extra-long mattresses, cable. Barbecues, coin laundry. Non-smoking and smoking rooms. Kitchens fully equipped. Clean and quiet. Open year round. Off-season rates Sept 1-June 20. Motel - 7 o/n, 10 hsk units. 17B&S. Daily \$49.95-64(2), \$5 add'l person.

CAIRNS MOTEL

★★★ (H/M)



436-5841; fax 436-2140
toll free 1-877-224-7676 (for reservations only)
stayanight@cairnsotel.pe.ca
cairnsotel.pe.ca (Summerside). On Rte 11, off Rte 1A. Aaron & Kendra Wedge and family, 721 Water St. East, Summerside, C1N 4J2. A clean, quiet, comfortable room awaits you at Cairns Motel. Beautiful water and flower gardens, picnic tables and park benches under shade trees, and our groomed trail which connects onto the Confederation Trail. All rooms have air conditioning, new queen-size Simmons Beautyrest mattresses, remote-control 27" colour, extended cable TV, clock radios, mini-fridge, hair dryer, ample lighting, microwave and iron/board available. Complimentary coffee served. Clean rooms guaranteed! Golf, laundromat, shopping centre, licensed dining nearby. On-site computer with high-speed internet. Beach, 1.5 km. AE, Interac, MC, V

accepted. Open May 1-Oct 31. Off-season rates before June 15 and after Aug 31. Motel - 15 o/n units. 15B&S. Daily \$59.95-69.95.

CLARK'S SUNNY ISLE MOTEL

★★★ (H/M)



436-5665; toll free 1-877-682-6824 (for reservations only)
myles@islandtelecom.com
www.sunnyislemotel.com (Summerside). On Rte 11, off Rte 1A. Myles, Brad & Phyllis Clark, 720 Water St. East, Summerside, C1N 4J1. Situated on 20 acres overlooking Bedeque Bay. Quiet, relaxing grounds feature water view, flower gardens, shade trees, picnic tables, park benches. Stroll the beautiful walking trail leading to our private waterfront. Units feature air conditioning, double or queen beds, mini-fridges, microwaves, hair dryers, individual heat control, wireless internet, 27-inch TVs with extended cable. Non-smoking and garden view units available. Near College of Piping, golf, shopping, Confederation Trail, restaurants, beaches. Free continental breakfast, May and October. Complimentary morning coffee. Daily maid service. Unit parking. Internet access. Major credit cards accepted. Open May 1-Nov 1. Off-season rates before June 15 and after Sept 30. Motel - 21 o/n units. 21B&S. Daily \$50-63(2), \$5 add'l person.

Come Stay A While...

- DINING ROOM & LOUNGE
- AIR-CONDITIONED
- 14 MOTEL ROOMS, 8 HOUSEKEEPING UNITS
- CABLE TV
- ONLY 3 KM FROM BEACH
- A SHORT DRIVE TO MILL RIVER CHAMPIONSHIP GOLF COURSE
- SHORT WALK TO PLAYGROUND
- TROUT FISHING

Travellers Inn



Located on Route 12
Entering Alberton



GREAT RATES

\$49⁹⁹ & Up + tax

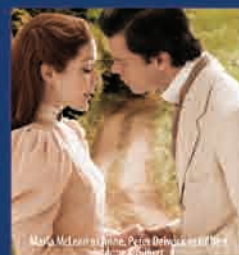
(902) 853-2215

1-800-561-STAY(7829)





Summerside



Great things to do at www.visitsummerside.com



North Cape
Coastal Drive



COUNTRY PINES INN & SUITES

★★★★ (H/M)



436-5564; off season 432-0225; fax 436-1320; toll free 1-866-494-5233
kbmccinnis@pei.eastlink.ca
www.thecountrypines.com
 Rte 1A. Bill, Kathy, Krista, Melody & Chelsie McInnis, North Bedeque. Relax at the Pines! Quiet country setting just 10 minutes from Confederation Bridge and two minutes from Summerside. Nestled on 6 acres surrounded by mature pines and cultivated fields, great for a peaceful stroll or picnic. Spectacular sunset view from our balcony guestrooms. Families love our spacious two-bedroom suites offering air conditioning, mini-fridges, 27-inch colour cable TVs. Enjoy a complimentary continental breakfast in our upper foyer or on our patio overlooking the heated outdoor pool. Honeymoon/executive jacuzzi suites. Minutes from beaches Golf and family packages. Pets welcome. *Open year round. Off-season rates Sept 15-May 31.*
Motel - 22 o/n units. 22B&S. Daily \$60-119(2), \$6 add'l person. Weekly \$420-595(2), \$36 add'l person.

ECONO LODGE

★★★★ (H/M)



436-9100; fax 436-8805
 toll free 1-800-268-7829
econolodgecn435@yahoo.ca
www.econolodgesummerside.com
 (Summerside). Hal Affleck, 80 All Weather Hwy., Summerside, C1N 4P3. Centrally located for shopping, beaches and golf. All rooms have direct-dial phones, colour cable TV and air conditioning. Adjoining rooms for families. Fully equipped kitchenettes available. Honeymoon suite has jacuzzi. Convention facilities for 175, AV equipment, dance floor. Heated indoor pool. Licensed lounge. Small pets allowed. All rooms newly renovated. All major credit cards accepted. *Open year round. Off-season rates Oct 1-May 31.*
Motel - 24 o/n, 16 hsk units. 40B&S. Daily \$60-125(2), \$15 add'l person. Continental breakfast included. Children under 18 free, when sharing with a parent or guardian.

GREEN ACRES MOTEL

★★★★ (H/M)



436-3508; toll free 1-866-390-3508
 (Summerside). On North Cape Coastal Drive, Rte 11. Elizabeth Wedge (manager), 115 Bayview Dr., Summerside, C1N 4A2. Come stay in our clean, comfortable, air-conditioned rooms. Remote-control, colour TV with extended cable. Fridge, stove, double and queen beds, pots, pans, dishes, cutlery, toaster and kettle supplied. Cots available. Non-smoking rooms. Quiet location with well-lit parking lot. Five-minute drive to College of Piping, Jubilee Theatre, shopping centres. Beach, 3 km; Summerside Golf Course (18-hole) within walking distance. Take TransCanada Hwy. to Rte 1A, west to North Cape Coastal Drive (Rte 11) and continue west for 6 km. Interac, MC, V accepted. *Open May 15-Sept 30.*
Motel - 1 o/n, 11 hsk units. 12B&S. Daily \$55-65(1-2), \$7.50 add'l person.
Suite - Daily \$85(2).

LINKLETTER INN AND CONVENTION CENTRE

★★★★ (H/M)



436-2157; fax 436-4499
 toll free 1-800-565-7829
linkletterinn@pei.aibn.com
www.virtuo.com/Linkletter/
 (Summerside). Rita M. MacCormack, 311 Market St., Summerside, C1N 1K8. Centrally located downtown within walking distance of Jubilee Theatre, the harbourfront (fishing), Confederation Trail, shopping and Spinnakers' Landing. Rooms have air conditioning, direct-dial phones. Free wireless internet and computer access. Fully equipped kitchenettes available. Indoor pool and outdoor patio. Inn has elevator and access for persons with disabilities. Laundry facilities. Golf, beach nearby. Small pets welcome. All major credit cards accepted. *Open year round. Off-season rates before June 1 and after Sept 30.*
Hotel - 83 o/n, 25 hsk units. 108B&S. Daily \$59.99-99.99(2), \$15 add'l person.

LOYALIST LAKEVIEW RESORT

★★★★★ (H/M)



436-3333; fax 436-4304
 toll free 1-877-355-3500
loyalistinn@pei.aibn.com
www.lakeviewhotels.com
 (Summerside). Greta Pike, 195 Harbour Dr., Summerside, C1N 5R1. Traditional inn offering all amenities of a luxury urban hotel, in the heart of Summerside. On a prime site overlooking Summerside Waterfront, Curling & Yacht Club and Marina. Licensed dining room, lounge, conference facilities. Two rooms for physically challenged persons, craft shop, indoor pool, sauna, exercise room, bike rental, outside patio. 30 rooms with whirlpool tubs. Major credit cards accepted. *Open year round. Off-season rates before June 1 and after Sept 30.*
Hotel - 95 o/n, 8 hsk units. 103B&S. Daily \$134-169(2), \$10 add'l person.
Suite - Daily \$269-299(2).

MULBERRY MOTEL

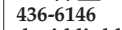
★★★ (H/M)



436-2520; fax 436-4210
 toll free 1-800-274-3825
mulberry@pei.sympatico.ca
www.peisland.com/mulberryinn
 (Summerside). Don Reid, 6 Water St East, Summerside, C1N 1A1. A moderately priced family destination with some not-so-moderate extras. Spacious rooms with secluded grounds. Centrally located on PEI, we are a short walk to Summerside waterfront and just minutes drive from deep-sea fishing, swimming and golf. You can be in Cavendish in less than 30 minutes, and Charlottetown is a pleasant 45-minute drive. We have efficiency and housekeeping rooms, barbecues, picnic tables, smoking/non-smoking, laundromat, telephones, basketball, volleyball and shuffleboard courts, playground. Adventure, golf and deep-sea packages are available. *Open year round.*
Motel - 13 o/n, 23 hsk units. 26B&S. Daily \$55-100(1), \$7.50 add'l person. Weekly \$330-600(1), \$45 add'l person.

PARKVIEW MOTEL & COTTAGES

★★★★★ (H/M)



436-6146
david.linkletter@pei.sympatico.ca
www.parkviewmotelppei.com
 (Linkletter). Off Rte 11 at Linkletter Beach. David & Nancy Linkletter, Summerside RR2, C1N 4J8. 6 km west of Summerside. Quiet country setting. One- and two-bedroom housekeeping cottages. Double beds in overnight and housekeeping motel units. Cable TV. Crib and cots available, extra. Swing sets on premises. Golf course, 3 km; bay beach, 200 m. Leashed pets permitted. MC, V accepted. *Open May 15-Sept 17.*
Motel - 5 o/n, 8 hsk units. 13B&S. Daily \$46-65(2), \$7 add'l person. Weekly \$300-400(2), \$40 add'l person.
Cottage - 4 hsk units. 2S, 2B&S. Daily \$65-90(2), \$7 add'l person. Weekly \$400-525(2), \$40 add'l person. Off-season rates available.

QUALITY INN GARDEN OF THE GULF

★★★★★ (H/M)

CAA-AAA



436-2295; fax 432-2911
 toll free 1-800-265-5551
info@qualityinnpei.com
www.qualityinnpei.com
 (Summerside). On Rte 11 off Rte 1A. Alfred V. Groom, 618 Water St. East, Summerside, C1N 2V5. Waterfront property ideally located within 30 minutes of most major attractions and golf courses (Cavendish, Woodleigh, Sandspit Amusement Park). Located directly across from College of Piping. Indoor and outdoor pools. 9-hole, par 3 golf. Bicycling. Gift shop. Coffee shop. Brothers Two Restaurant and dinner-theatre. Non-smoking rooms. Jacuzzi suites. Pets permitted in Simpson Court. *Open year round. Off-season rates before June 1 and after Sept 30.*
Hotel - 94 o/n units. 67B&S, 27S. Daily \$119-189(2), \$10 add'l person.
Suite - Daily \$189-289(2).



*When you've been around
for 102 years,
you really get to know a place.*

Her grandfather was a leader in the ship building industry. She was one of only five women to be accepted into McGill University between 1901 and 1919, and the first woman from PEI to study law. She traveled the globe, amassing a remarkable collection of artifacts. You can learn about Wanda Wyatt's extraordinary life at the Wyatt Historic House, her Summerside home where she lived to the age of 102.



Ride the Wyatt's sense of adventure as you discover Summerside! Enjoy historical guided tours, beachfront boardwalks, live theater, good food and local flavor in one of Eastern Canada's finest cities. We offer the essential mix of urban amenities and vibrant culture! The sights and sounds of present day Summerside are waiting for you!

city of
Summerside

Call 1-877-734-2382 or visit www.visitsummerside.com today.

"SUMMERSIDE'S BEST LOCATION TO EXPERIENCE THE ISLAND"

MACCORMACK'S ECONO LODGE

Summerside is a Hot Spot for all of your fun! Take in a live production at the Jubilee Theatre, go biking or hiking on our Confederation Trail, or visit our boardwalk at Spinnaker's Landing.

An ideal spot for your family's vacation. We are minutes away from spectacular beaches, great shopping and "Anne of Green Gables".

The Econo Lodge offers something for all of our guests:

- Fully equipped kitchenette units
- Indoor Heated Swimming Pool
- Lounge
- Complimentary coffee & tea 24 hours a day
- Complimentary deluxe continental breakfast
- Senior, Corporate, and CAA/AAA rates
- Free local phone calls and children under 18 stay free
- Strolling distance from one of PEI's largest indoor/outdoor flea markets, open every Sunday year round

80 All Weather Highway, Summerside P.E.I. C1N 5L3

phone 902.436.9100 fax 902.436.8805

1.800.268.STAY (7829)

www.econolodgesummerside.com

Great Rates Starting at \$59.99 and up



Econo Lodge



GREAT RATES STARTING AT \$59.99* & UP.

*plus applicable taxes

MACCORMACK'S LINKLETTER INN

- Family Restaurant on Site
- Indoor Heated Swimming Pool
- 108 Bedrooms 3 1/2 Star Property
- Walking distance to:
Summerside Beach & Boardwalk
Shopping
Summerside Racetrack / Aquaplex
Summerside Queen Elizabeth Ballpark
- Small Pets Welcomed in Motel Section

WOW
WHAT-A DEAL

Downtown Location
Without the Downtown Price!



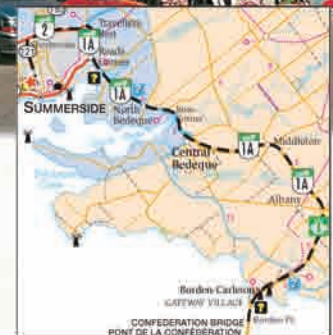
M^{rs} Cormack's
Linkletter
INN AND CONVENTION CENTRE

311 Market Street
Summerside, PEI, C1N 1K8

Phone: 902.436.2157 / Fax: 902.436.4499

1.800.565.STAY (7829)

www.virtuo.com/linkletter



From Confederation Bridge follow 1A to Route 2. Stay on Rte. 2 and turn left on to Central Street (route 121). We are on the corner of Central and Market.



Summerside's Premier Waterfront Hotel



195 Harbour Drive,
Summerside, PEI

Tel: (902) 436-3333

**TOLL FREE RESERVATIONS
1-877-355-3500**

www.lakeviewhotels.com

- Prince William Dining Room
- Crown & Anchor Tavern
- Indoor Pool • Exercise Room
- Charming Rooms & Suites
- Gift Shop • Free Movie Rentals
- Free Wireless Internet Service
- Business Centre



Quality Inn

GARDEN OF THE GULF

Relax, rejuvenate, and play... this waterfront property is stuffed with interesting and exciting activities... free golf (9 hole par three), two swimming pools, Brothers Two Restaurant, Pub, and Feast Dinner Theatre, The Harbourfront Jubilee Theatre, Island walking, hiking, and biking trails, The College of Piping, and great shopping... only moments away... tour the Island from our central location... we're 30 easy minutes from Anne of Green Gables at Cavendish, most major attractions, and championship golf courses.



Please call for information
on our vacation packages.

Value Packages:

Honeymoon Package from \$139
Based on 2 people

Family Getaway from \$299
Based on a family of 4 for 2 nights

Escape for Two from \$329
Based on 2 people for 2 nights

618 Water Street East (Route 11)
Summerside, PE C1N 2V5

1-800-265-5551 (toll free)
902-436-2295 (telephone)

www.qualityinnpei.com



*Always something to celebrate at
Brothers Two Restaurant and Feast Dinner Theatres*



SLEMON PARK HOTEL

★★★★ (H/M)



432-1780; fax 436-4523
toll free 1-877-STAYPEI
staypei@slemonparkhotel.com
www.slemonparkhotel.com
(Slemon Park). Rte 2, west of Summerside. Kevin Mouffler, general manager, 12 Redwood Ave., Box 90, Slemon Park, C0B 2A0. Located 30 minutes from Confederation Bridge and most major attractions/golf courses in Cavendish. Standard rooms with one queen or two double beds, large suites and full housekeeping units. One barrier-free housekeeping unit. Rooms newly renovated including furniture, air conditioning, coffee-makers, cable TV, free local calling, free high-speed internet access. Children under 12 stay free. Customer service and cleanliness is our number one priority. Adjacent to Summerside Airport. Family restaurant on site. Vacation packages for golf, air tours, deep-sea fishing, etc. Major credit cards accepted. *Open year round.*
Hotel - 74 o/n, 43 hsk units. 118B&S. Daily \$80-120(2), \$10 add'l person. Weekly rates available. Continental breakfast included.

SUMMERSIDE MOTEL AND FAMILY RESTAURANT

★★★★ (H/M) ★★(C)



436-3865
toll free 1-800-386-6734
sside.motel.restaurant@eastlink.ca
www.webspawner.com/users/sside/index.html
(Reads Corner). Janice & John Holmes, 500 Read Dr., Summerside, C1N 5A9. Welcome to your home away from home. Family-owned and -operated motel and licensed restaurant. Clean, comfortable, newly renovated, non-smoking rooms. Cable TV, air-conditioned, phones, barbecues, coin laundry and playground on our spacious property. Minutes from Confederation Bridge, Confederation Trail, Summerside Golf Course, College of Piping, beaches, boardwalk and Shipyard Market. Stay three nights or more, save 15% on our competitive rates. *Open year round. Off-season rates Sept 11-June 23.*
Motel - 12 o/n, 12 hsk units. 24B&S. Daily \$50-89(2).
Cottage - 1 o/n, 1 hsk unit. 1B&S, 1S. Daily \$50-89(2).

TIGNISH AREA B-2**ISLAND'S END MOTEL**

★★★★ (H/M)



882-3554 info@islandsendmotel.com
www.islandsendmotel.com
(Seacow Pond). Off Rte 12, 42 Doyle Rd. Jacqueline (manager), Box 547, Tignish, C0B 2B0. 6 km north of Tignish. Seven rooms with single or double beds. 5 km from Wind

Test Site and restaurant at North Cape. Quiet location overlooking Gulf of St. Lawrence. Walking distance to beach. Deep-sea fishing, Irish moss harvesting and golf nearby. Children under 6 free. Also one light-housekeeping houseboat cottage. 48-hour cancellation policy applies. MC, V accepted. *Open year round.*
Motel - 3 o/n, 4 hsk units. 7B&S. Daily \$65-75(2-4), \$7 add'l person. Weekly and off-season rates available.

Houseboat - 1 hsk unit. 1S. Weekly \$630(4), \$49 add'l person.

WOODSTOCK D-2**LEWIS MOTEL & RESTAURANT**

★★★★ (H/M)



859-2396; toll free 1-800-838-2084
On Rte 2 West. Harry & Ella Lewis, O'Leary RR3, C0B 1V0. Seven rooms with two double beds, five with one double. Near golf, fun park, beaches, shopping, marina, churches, Confederation Trail. Pets permitted if attended. Satellite TV. AE, MC, V accepted. *Open May 30-Nov 30.*
Motel - 12 o/n units. 7B&S, 5S. Daily \$50-60(2), \$5 add'l person. Weekly \$336-406(2), \$35 add'l person. No charge for children under 13.

RODD MILL RIVER - A RODD SIGNATURE RESORT

★★★★ (R)



859-3555; fax 859-2486
toll free 1-800-565-RODD(7633)
rodd@roddhotelsandresorts.com
www.roddhotelsandresorts.com
Off Rte 2, 57 km west of Summerside. Box 399, O'Leary, C0B 1V0. Kids Eat Free in July and August (conditions apply). Full-service, newly renovated resort with 18-hole championship golf course (ranked within top 50 in Canada), indoor pool, 90-ft. waterslide, kiddies' pool, whirlpool, sauna, Rodd Spa Boutique, squash courts, tennis courts (day/night), large fitness centre, aerobics, restaurant and lounge. Marina with canoeing, windsurfing, kayaking, biking and recreation programs. Conference facilities for 250. Family, golf and winter packages available (see website). CAA/AAA and seniors discounts. All major credit cards accepted. *Open Jan-Oct.*
Hotel - 90 o/n units. 90B&S. Daily \$98-198(2), \$10 add'l person.
Suite - Daily \$146-272(2), \$10 add'l person. Children 16 and under stay free (cots extra). Off-season rates available.

Slemon Park Hotel & Conference Centre Welcomes You

Our associates will ensure that your stay is relaxing and enjoyable in pampering you with unforgettable service. Come and be our guest. We offer competitive rates year round.



Air Tours provided by FD Air

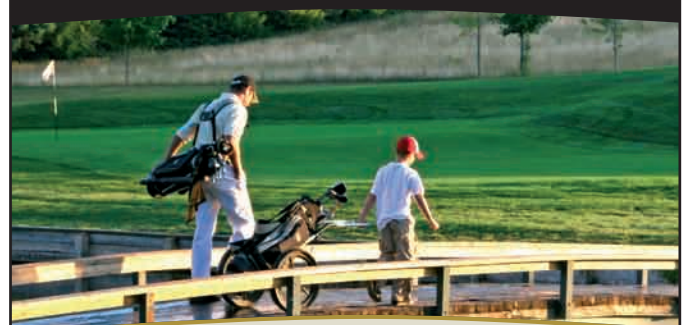
Tours starting from \$105⁰⁰ per person

Summerside Airport On Site



Golf packages start at \$76⁰⁰ per person

Check our online packages at
www.slemonparkhotel.com or
Email: staypei@slemonpark.com or
Call Toll Free 1-877-STAYPEI

**FAMILY FUN RESORT!**

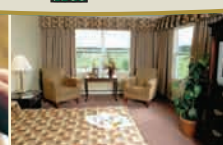
Rodd
Mill River

A RODD SIGNATURE RESORT

Woodstock, Prince Edward Island

"Outstanding - plan your vacation around it"
- Golf Digest

Specializing in family, golf & retreat vacations.



Our website tells the story... www.roddvacations.com/pei
1-800-565-RODD (7633)



• ACCOMMODATIONS •

*inns/bed & breakfasts***ALBERTON C-3
BRIARWOOD INN, COTTAGES
AND LODGE**

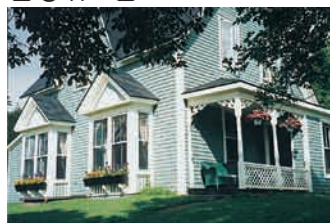
★★★★ (B&B)

(See Cottages, page 95)

HUNTER HOUSE INN

★★★★★ (B&B)

☎ ♻ ♻ ♻ ♻ ♻ ♻



853-4027; toll free 1-888-853-4027
www.bbcanada.com/hunterhouse
 On Rte 152. Phil & Diane Rochefort, Alberton RR2, COB 1B0. 1886 farmhouse set amidst six landscaped acres. Guest living room. Spacious, antique-furnished bedrooms (one with romantic enclosed balcony). Private baths, sitting areas, queen beds. Barrier-free suite: separate living room; private, screened verandah with hot tub. Moonlight garden. Confederation Trail, harbour, museum, golf, beaches, capes, woollen mill nearby. "A jewel in the heart of Prince County." Gourmet breakfast. MC, V accepted. *Open May-Oct.*
Bed & Breakfast - 3 o/n units. 1B&S, 2S. Daily \$89(2), \$15 add'l person.
Suite - Daily \$120(2), \$15 add'l person. Full breakfast included.

LA PETITE FRANCE

★★★★ (B&B)

☎ ♻ ♻ ♻ ♻ ♻ ♻

853-3975; fax 853-3975
hubert_lihrmann@hotmail.com
 Michele Lihrmann, 441 Church St., Alberton, COB 1B0. Discover French hospitality in a Victorian house. Located downtown, next to Alberton's historic museum. Sit back, enjoy yourself in our garden. French, German and English spoken. Optional dinner off-season. *Open May 1-Oct 31.*
Bed & Breakfast - 2 o/n units. 1B&S. Daily \$55(1-2), \$15 add'l person. Weekly \$330(1-2), \$90 add'l person.

**BAYSIDE E-5
CAERNARVON COTTAGES,
B&B AND GARDENS**

★★★★★ (B&B)

☎

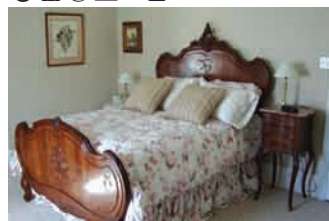
854-3418; toll free 1-800-514-9170
2cappers@pei.sympatico.ca
www.cottagelink.com/caernarvon
 4697 Rte 12 (North Cape Coastal Drive). Rusty Capper, Richmond RR1, COB 1Y0. King-size bed. Balcony overlooks our gardens and has a panoramic view of Malpeque Bay. Private bath, therapeutic tub. Full

breakfast. Pets in residence. (See listings under Cottages and Gardens). *Open June 15-Sept 15.*
Bed & Breakfast - 1 o/n unit. 1B. Daily \$100(2).

**BEDEQUE F-6
HISTORIC MAPLETHORPE
BED & BREAKFAST**

★★★★★ (B&B)

☎ ♻ ♻ ♻ ♻ ♻ ♻



887-2909; fax 887-3226
 toll free 1-866-770-2909
historicmaplethorpe.com
 Dianna Linder & James Kimmert, 2123 Hwy 112, Bedeque, COB 1C0. Central location, great rates and exceptional service! Exquisite single rooms, suites and weekly vacation apartment. All with private baths, in-room cable TV, wireless internet. Fantastic breakfasts. Children welcome. CAA/AAA discount. *Open year round.*
Bed & Breakfast - 4 o/n units. 2B&S, 2S. Daily \$80-160(2), \$15 add'l person.

BIDEFORD D-4**HILLTOP ACRES
BED & BREAKFAST**

★★★★★ (B&B)

☎ ♻ ♻ ♻ ♻ ♻ ♻

831-2817; fax 831-2817
 toll free 1-877-305-2817 (for reservations)
wjt_hilltop@pei.sympatico.ca
www.bbcanada.com/hilltopacres
 694 Bideford Rd. Mrs. Janice (Wayne) Trowsdale, Box 3011, Eilerslie, COB 1J0. Enjoy the quiet of the country in historic Bideford, where L. M. Montgomery first taught school. Relax on balcony, on garden swings, decks, screened gazebo or guest living room. Spacious treed lawn. Excellent cycling, 3 km from Confederation Trail. Queen bedroom has private *en suite* bath; two-bedroom suite has private bath. Homemade preserves. Multi-night discounts. Interac, MC, V accepted. *Open July 1-Aug 31. June and Sept, Fri and Sat nights only. Off-season by reservation.*
Bed & Breakfast - 2 o/n units. 2B&S. Daily \$70(2). Weekly \$455(2). **Suite** - Daily \$110(4).

**MAXIMEVILLE F-4
CHEZ ÉVANGÉLINE
BED & BREAKFAST**

★★★★ (B&B)

☎ ♻ ♻ ♻ ♻ ♻ ♻

854-3097
 Rte 11 (North Cape Coastal Drive). Évangéline Gallant, Box 35, Wellington RR3, COB 2E0. In Région Acadienne. One room with two double beds, and three with one double bed. Crib available.

Bilingual. Beach nearby. Barbecue on request. *Open June 1-Sept 30.*
Bed & Breakfast - 4 o/n units. 1B&S, 1S. Daily \$50(2), \$8 add'l person. Weekly \$300(2), \$30 add'l person. Breakfast included.

**MISCOUCHE E-5
LECKY'S BED & BREAKFAST INN**

★★★★ (B&B) ★★★★★ (C)

☎ ♻ ♻ ♻ ♻ ♻ ♻



436-3216; toll free 1-888-220-4059
lecky@pei.sympatico.ca
www.lecky.ca
 11 North Cape Coastal Drive, rtes 2 and 12. Allen & Dorothy Lecky, Box 336, Miscouche, COB 1T0. Special-value packages, pictures of rooms, and fantastic food. See our website for best value on PEI! The beauty, comfort, tranquility of this unique historic property, combined with the host chef's 35 years' culinary/hospitality experience, is truly an experience! This Victorian inn boasts four dining rooms, 14 rooms with *en suite* baths, observation decks, internet, horseshoes, antiques. 12 bikes for touring nearby Confederation Trail, local beach, attractions. Treat yourself to "the best five-course lobster/steak dinner you will ever taste!" Enjoy a sunshine breakfast on our breakfast patio. Tranquil relaxation. *Open year round.*
Breakfast Inn - 14 o/n units. 7B&S, 7S. Daily \$69-99(1-2), \$15 add'l person.
Housekeeping Unit - 2 hsk units. 1B&S, 4S. Daily \$99(2), \$15 add'l person. Weekly \$589(2), \$89 add'l person.

**NORTHPORT C-3
NORTHPORT PIER INN**

★★★★★ (I)

☎ ♻ ♻ ♻ ♻ ♻ ♻



853-4520; toll free 1-866-887-4520
inn@northportpier.ca
www.northportpier.ca
 Luxury oceanfront inn offering spectacular views of Cascumpec Bay and the intriguing ambience of a busy fishing harbour. Watch scores of blue heron arriving from their rookery to feed in the shallow waters at low tide. Craft shops, marina, seafood restaurant, bike racks, interpretive centre on premises. Tranquil setting for beach walks. Confederation Trail

bike path nearby. All rooms have private baths, balconies or patios overlooking the harbour, desks, data ports. Barrier-free rooms feature wheelchair-accessible showers, patio. Exercise room. Meeting rooms for executive or artist retreats. Minutes from excellent golf. *Open May-Oct.*
Inn - 12 o/n units. 10B&S, 2S. Daily \$145(2), \$15 add'l person.
Suite - 2 o/n units. 2B&S (whirlpool). Daily \$180(2), \$15 add'l person. Full breakfast included.

**O'LEARY D-2
LILLY'S GARDEN GUEST HOME**

★★★★ (B&B)

☎ ♻ ♻ ♻ ♻ ♻ ♻

859-3304
harrisliillian@hotmail.com
www.bbcanada.com/3668
 2923 O'Leary Rd., Knutsford (Rte 142). Lillian & Clayton Harris, O'Leary RR1, COB 1V0. *Open year round.*
Bed & Breakfast - 2 o/n units. 1B&S. Daily \$60-70(2), \$10 add'l person. Weekly \$360-420(2), \$48 add'l person.

**RICHMOND E-4
MOM'S BED 'N' BREAKFAST
CENTURY HOME**

★★★★ (B&B)

☎ ♻ ♻ ♻ ♻ ♻ ♻

854-2419; off season 863-3665
 toll free 1-888-666-7999 (for reservations only)
jmachielsen@ns.sympatico.ca
 At intersection of rtes 2 West and 127. Erma Gaudet-MacArthur, Richmond, COB 1Y0. Experience the ambience of this elegant early 1800s country home which has retained its original character. Adjacent to the Confederation Trail. Accommodates families, couples, singles. V accepted. *Open May-Oct 15.*
Bed & Breakfast - 3 o/n units. 2B&S, 1/2B. Daily \$60-70(2), \$10 add'l person.
Suite - Daily \$110-130(4-6). Full breakfast included.

**SPRINGFIELD WEST D-1
BARTLE'S BED & BREAKFAST**

★★★★ (B&B)

☎ ♻ ♻ ♻ ♻ ♻ ♻

859-2430
chuck.bartle@pei.sympatico.ca
bbcanada.com/bartlesbb8363
 Charles Bartle, Springfield West, COB 1V0. *Open May-Oct. Off-season rates before June 16 and after Sept 14.*
Bed & Breakfast - 2 o/n units. 1B&S. Daily \$60(2), \$10 add'l person. Weekly \$360(2), \$60 add'l person.



SUMMERSIDE AREA E-6 ART GALLERY BED & BREAKFAST

★★★★★ (B&B)
☎ ☑ ☒ ☓ ☔ ☕ ☖



887-2683; toll free 1-877-388-2683
freitag@pei.sympatico.ca
www.bbcanada.com/artgallery
(North Bedeque). 407 MacMurdo Rd., (Rte 120), 1.5 km off Rte 1A. Arno Freitag & Linda Cooke-Freitag, Summerside RR3, C1N 4J9. Quiet century home, beautifully decorated, spacious rooms, queen beds, en suite baths. Modern amenities with the elegance of yesteryear. Close to theatres, restaurants, shopping, golf course. Centrally located. Wireless internet. MC, V accepted. Open year round. Oct-May by reservation only. Bed & Breakfast - 5 o/n units. 4B&S, 1S. Daily \$90-95(2), \$20 add'l person. Full breakfast included.

BIRCHVALE FARM BED & BREAKFAST

★★★★★ (B&B)
☎ ☑ ☒ ☓ ☔ ☕ ☖

436-3803; toll free 1-800-463-3803
birchvale@pei.sympatico.ca
www.peisland.com/birchvalefarm
(Wilmet Valley). 3 km off Rte 1A on Rte 120 (MacMurdo Rd.), between Rtes 1A and 107. Arnold & Barbara Waugh, Summerside RR3, C1N 4J9. Welcome to our modern Century Farm Home, in the family for six decades and hosting guests for 22 years. Our farm grows hay, barley and potatoes. We have two rooms with private baths and a suite with two double beds and en suite bath. Colour cable TV in each room. Centrally located 20 minutes from Confederation Bridge and 25 minutes from Cavendish. Minutes from the City of Summerside. No smoking or pets, please. Reduced rates for two or more nights. V accepted. Open May 1-Oct 31. Off-season rates before June 15 and after Sept 15. Farm Bed & Breakfast - 3 o/n units. 3B&S, 1/2B. Daily \$55-65(1-2), \$12 add'l person. Breakfast included.

THE BLUE SHANK INN

★★★★★ (B&B)
☎ ☑ ☒ ☓ ☔ ☕ ☖

436-1171; toll free 1-866-436-1171
inn@blueshankinn.com
www.blueshankinn.com
(Summerside). Rte 107, Blue Shank Rd. Dr. Scott & Susan Cameron, Summerside RR3, C1N 4J9. Enjoy complete privacy in our little inn in the west end of our heritage home. Comfortable bedrooms, private baths, and guest living room and dining room await you. Full breakfast. Open May-Oct. Bed & Breakfast - 3 o/n units. 2B&S, 1S. Daily \$79-89(2), \$12 add'l person. Weekly \$474-546(2), \$72 add'l person.

CHIMNEYS BED & BREAKFAST

★★★★★ (B&B)

☎ ☑ ☒ ☓ ☔ ☕ ☖

436-1027; toll free 1-888-693-4669
www.chimneysbandb.com
(Linkletter). 1770 Linkletter Rd., Rte 11. Jan & Frank Henry, Summerside RR2, C1N 4J8. A warm welcome awaits at our beautifully restored Victorian farmhouse furnished with many period antiques. Situated on two acres with extensive flower gardens and a view of Northumberland Strait. 1 km to beach, minutes to downtown. Each room features fresh flowers, private four-piece bath, coffee, tea, homemade cookies, wireless internet connection, cable TV/VCR. Movies available. Outdoor and indoor games. 24-ft. pool with large deck, sandbox, swing set. Children welcome. Full farm breakfast with large choice of hot dishes included. MC, V accepted. Open year round. Off-season rates before June 15 and after Sept 15. Bed & Breakfast - 2 o/n units. 2B&S. Daily \$65-75(2), \$10 add'l person. Weekly \$375-425(2). Full breakfast included.

COMME CHEZ VOUS

★★★★★ (B&B)

436-8600 ☎ ☑ ☒ ☓ ☔ ☕ ☖
anwe@pei.sympatico.ca
(Summerside). André Cormier & Wendell Cameron, 161 Fitzroy St., Summerside, C1N 1H2. A warm welcome awaits you at Comme Chez Vous, a beautiful heritage home. We offer a quiet, restful atmosphere where you can lounge next to the fireplace, relax in the backyard, or in your room with a good book. Centrally located downtown, close to shopping, live theatre and entertainment, art gallery, antique shops, restaurants, churches, spas, Spinnakers' Landing and Confederation Trail. You will not have to walk far until you find something to pique your interest! Dinner by arrangement. Open year round. Off-season rates Oct 1-May 31. Bed & Breakfast - 2 o/n units. 1B&S, 1S. Daily \$85-110(2), \$15 add'l person. Weekly \$660(2), \$90 add'l person.

COPPLE SUMMER HOLME

★★★★★ (B&B)

☎ ☑ ☒ ☓ ☔ ☕ ☖



436-3100; off season (403) 238-4919
toll free 1-866-622-3100
pjcopple@pei.sympatico.ca
www.copplesummerholme.com
(Summerside). Jacquie & Peter Copple, 92 Summer St., Summerside, C1N 3H9 (winter: 45 Wood Valley Rd. SW, Calgary, AB, T2W 5Y6). Exquisite respite for mature travellers with discerning taste. Golf, restaurants, beaches nearby. Private bathrooms.

Gourmet breakfast. Cancellation policy. Amenities: internet access, dinner by arrangement, picnic requests. Interac, MC, V accepted. Open June 1-Oct 15. Bed & Breakfast - 3 o/n units. 1B&S, 2S. Daily \$90(1-2), \$20 add'l person.

COUNTRY AT HEART BED & BREAKFAST & TOURIST APARTMENT

★★★★★ (B&B) ★★★★★ (C)

☎ ☑ ☒ ☓ ☔ ☕ ☖

436-9879; toll free 1-800-463-9879
countryatheart@pei.sympatico.ca
www.bbcanada.com/countryatheart
(North Bedeque). Off Rte 1A on Rte 181 (207 Taylor Rd.). Carl & Vivian Wright, Summerside RR3, C1N 4J9. Welcome to our home on a quiet country road in scenic farming area 2 km east of Summerside. Attractive, comfortable rooms, each with queen bed (one en suite bath) and one two-bedroom unit. Ceiling fans. Home baking. Minutes to Confederation Trail, College of Piping, theatres, restaurants, shopping, golf, beaches. Ideal location to tour our beautiful island. Spacious, well-equipped, two-bedroom housekeeping apartment with double beds. Private entrance, patio, barbecue, microwave, cable TV, fans. Confederation Bridge, 20 minutes; Cavendish, 30 minutes. Reduced rates for 3 or more nights. AE, MC, V accepted. Open year round. Off-season rates Sept 1-June 30. Bed & Breakfast - 2 o/n units. 1B&S, 1S. Daily \$60-70(1-2), \$10 add'l person. Apartment - 1 hsk unit. 1B&S. Weekly \$600(2-4), \$90 add'l person. Suite - Daily \$130(1-4). Breakfast included.

HONEYSUCKLE INN

★★★★★ (B&B) ★★★★★ (C)

887-3485 ☎ ☑ ☒ ☓ ☔ ☕ ☖

info@honeysuckleinn.ca
www.honeysuckleinn.ca
(Summerside). 21 Baker Shore Rd., Jane & Suzanne Bateup, Summerside RR3, C1N 4J9. Come and stay at Honeysuckle Inn and take a break from the rest of the world! Beautiful country setting just off Rte 1A, minutes from Summerside. The bedrooms are beautifully decorated and feature en suite baths and quality queen-size beds. Enquire about our large two-bedroom housekeeping apartment. No pets. No smoking. See our website for details. Reservations recommended. Open June 1-Sept 15. Bed & Breakfast - 3 o/n units. 2B&S, 1S. Daily \$75-105. Breakfast included. Apartment - 1 hsk unit. 1B&S. Weekly \$700.

NEW ANNAN BED & BREAKFAST

★★★★★ (B&B)

☎ ☑ ☒ ☓ ☔ ☕ ☖

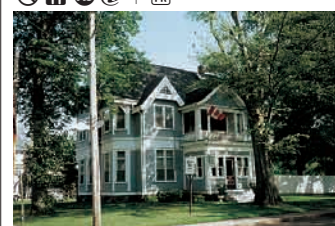
436-7941; toll free 1-877-436-7941
newannanbb@yahoo.ca
www.bbcanada.com/newannan
(New Annan). 25843 Rte 2. Bev & Kent Marchbank, Summerside RR2, C1N 4J8. Ranch-style home.

Country setting on one-acre treed lot. Solar-heated pool, sun deck. Bicycle storage, parking available. One double, one queen. Ask about pets. Confederation Trail, 150 m. Minutes from many attractions and services. Two-night minimum booking. Reservations recommended. Hearty skip-lunch breakfast. Family rates. Cancellation policy. AE, MC, V accepted. Open June 15-Sept 15. Off-season rates in June and Sept. Bed & Breakfast - 2 o/n units. 2B&S (1 whirlpool). Daily \$70-80(2), \$15 add'l person. Breakfast included. Weekly rates available.

SILVER FOX INN

★★★★★ (B&B)

☎ ☑ ☒ ☓ ☔ ☕ ☖



436-1664; toll free 1-800-565-4033
silverfoxinn@eastlink.ca
www.silverfoxinn.net
(Summerside). Rod & Penny Herbert, 61 Granville St., Summerside, C1N 2Z3. "Good things come to those..." who choose to stay at our Inn! This beautiful heritage home offers peace and tranquility - the perfect spot from which to base all your Island touring. "Early Bird" coffee, full breakfast buffet, lunch and afternoon tea available in our tea room. Dinner? Yes we do that too! Evening coffee, laundry service, picnic lunches, en suite bathroom and air conditioners in all rooms. Extended-stay discounts. Visit our website for details on how to "Come home to our Island." AE, MC, V accepted. Open year round. Bed & Breakfast - 4 o/n units. 4B&S. Daily \$125-140(2), \$25 add'l person. Breakfast included.

SUMMERSIDE INN

★★★★★ (B&B)

☎ ☑ ☒ ☓ ☔ ☕ ☖

436-1417; toll free 1-877-477-1417
jim.morse@pei.sympatico.ca
www.peisland.com/summersideinn
(Summerside). Jim & Jeannie Morse, 98 Summer St., Summerside, C1N 3J2. Gorgeous Queen Anne Century home. Former residence of two Island premiers and a chief justice. Four rooms with private baths. Three blocks from downtown, waterfront. Cancellation policy. Open year round. Bed & Breakfast - 4 o/n units. 3B&S, 1S. Daily \$85-95(2), \$15 add'l person. Breakfast included.



**THE WARN HOUSE
BED AND BREAKFAST**

★★★★★ (B&B)



436-5242; fax 436-2442
toll free 1-888-436-7512
drdavidson@auracom.com
www.warnhouse.com
(Summerside). David & Barbara Davidson (innkeepers), 330 Central St., Summerside, C1N 3N1. Charming colonial home nestled among mature trees on a two-acre property in the heart of Summerside. The home's antique furnishings, accented with Canadian art, reflect a feeling of comfort and tradition. Suites offered have king, queen and twin beds, all with private bath. Enjoy a gourmet breakfast. Bicycle storage. Deposit required. Cancellation policy. *Open year round.*
Bed & Breakfast - 4 o/n units. 2B&S, 2S. Daily \$90-125 (1-2), \$25 add'l person. Breakfast included.

**WILLOWGREEN FARM
BED & BREAKFAST**

★★★★★ (B&B)



436-4420; toll free 1-888-436-4420
(for reservations)
willowgreenfarm@pei.aibn.com
www.willowgreenfarm.com
(Summerside). Steven & Laura Read, 117 Bishop Dr., Summerside, C1N 5Z8. A unique pastoral farm setting "in the city." Welcome to our spacious country homestead, a haven within walking distance of dining, entertainment or fields. After beaches, sightseeing and theatre, come home to the farm! Minutes from downtown, behind the College of Piping and on the Confederation Trail is where you will find us. Comfortable theme rooms with your needs in mind, all with private bath, one with air conditioner, and some on main floor. Laundry services available. Handmade sweaters/crafts for sale. Reservations recommended. MC, V accepted. *Open year round.*
Bed & Breakfast - 9 o/n units. 4B&S (3 whirlpool), 1B, 4S. Daily \$50-100(2), \$10 add'l person. Weekly \$300-600(2), \$60 add'l person. Breakfast included. Off-season rates available.

**TIGNISH AREA B-2
CHAISSON HOMESTEAD**

(See Cottages, page 98)

**MURPHY'S TOURIST
HOME & COTTAGES**

★★★★★ (B&B)

(See Cottages, page 99)

**TIGNISH HERITAGE
INN & GARDENS**

★★★★★ (B&B)



882-2491; fax 882-2500
toll free 1-877-882-2491
heritageinn@tignish.com
www.tignish.com/inn
(Tignish). Behind St. Simon & St. Jude Church, off Maple St. Box 398, Tignish, C0B 2B0. Built in 1868, this restored heritage property featuring magnificent floral gardens offers the unique charm of the past with all the modern amenities. Minutes from North Cape, beaches and golf. Within walking distance of restaurants, museum, shopping and mile zero of Confederation Trail. 17 guest rooms with private bath/shower and cable TV. Honeymoon suite. Kitchen and laundry facilities available. 48-hour cancellation policy with the exception of groups. Open to groups year round (some restrictions apply). In-house packages. *Open mid-May to mid-Oct. Off-season rates before June 15 and after Sept 15.*
Breakfast Inn - 17 o/n units. 15B&S, 2S. Daily \$80-115 (1-2), \$10 add'l person. Weekly \$480-720 (1-2), \$60 add'l person. Children under 6 free. Continental breakfast included.

TYNE VALLEY D-4**THE DOCTOR'S INN
BED & BREAKFAST**

★★★★★ (B&B)

831-3057
doctorsinn@pei.sympatico.ca
www.peisland.com/doctorsinn
On Rte 167. Paul & Jean Offer, Tyne Valley, C0B 2C0. 30 km west of Summerside, 4 km from Green Park and river swimming. Beautifully landscaped village home, c. 1860. Cozy living room with fireplace. Two-acre organic market gardens provide fresh vegetables. Dining by reservation. Recommended in *Where to Eat in Canada '92-'02* (one-star rating). One double, one queen. Adult environment. Cancellation policy. MC, V accepted. *Open year round.*
Bed & Breakfast - 2 o/n units. 1B. Daily \$60-75(2), \$15 add'l person. Weekly \$360-450(2), \$90 add'l person. Breakfast included.

**URBAINVILLE E-4
CHEZ YVETTE BED & BREAKFAST**

★★★★★ (B&B)



854-2966
On Rte 124 off Rte 2. Yvette Deschênes, Box 63, Urbainville, C0B 2E0. Located in the heart of the Evangeline area and surrounded by magnificent flower gardens, this pristine establishment offers a fine blend of traditional and modern comfort. Breakfast is served in the dining room, graced with fine antiques. Three rooms:

two with queen-size beds, and one with two single beds. Cots available. Bilingual. Completely renovated homestead. *Open May 1-Oct 31. Off-season rates in Oct.*
Bed & Breakfast - 3 o/n units. 1B&S, 1S. Daily \$60(1-2), \$10 add'l person. Weekly \$360(1-2), \$70 add'l person. Breakfast included.

**WEST POINT E-2
STEWART MEMORIAL BEACH
HOUSE BED & BREAKFAST**

★★★★★ (B&B)

859-2970/1939
audrey.macdonald@pei.sympatico.ca
www3.pei.sympatico.ca/~audrey.y.macdonald
On Rte 14. Audrey MacDonald, West Point, C0B 1V0. *Open May 1-Oct 31.*
Bed & Breakfast - 3 o/n units. 1B&S, 1S. Daily \$65-75. Weekly \$390-450. Full breakfast included.

**WEST POINT LIGHTHOUSE INN,
RESTAURANT & MUSEUM**

★★★★★ (I)



859-3605; fax 859-1510
toll free 1-800-764-6854
wplight@isn.net
www.westpointlighthouse.com
Rte 14 and Cedar Dunes Park Rd. Experience romance in Canada's unique first inn in an active lighthouse, featuring the popular "Tower Room" in the lighthouse tower itself. The best of history, culture and nature in one location. Beautiful sandy beach, trails, museum, licensed full-service seaside restaurant, patio. Nine rooms - private baths, antiques, homemade quilts. Double/queen beds. Two whirlpool tubs. Cancellation/deposit policy. AE, MC, V accepted. *Open May 28-Sept 30.*
Inn - 9 o/n units. 9B&S. Daily \$90-145(2). Weekly \$540-870(2).

**WEST POINT RED BEACH
COTTAGE SUITES AND B&B**

★★★★★ (B&B) ★★★★★ (C)



859-2199; toll free 1-800-321-0439
westpointredbeach@yahoo.ca
www.bbcana.com/westpointredbeach
Located 4 km north west of West Point Lighthouse Restaurant on Rte. 14 (North Cape Coastal Drive). Ada Ellis, West Cape, O'Leary RR1, C0B 1V0. *Open May 15-Oct 31.*
Bed & Breakfast - 1 o/n unit. 1B&S. Daily \$70(2). Full breakfast included.
Suite - 1 hsk unit. 1S. Daily \$60-100(1-5), \$20 add'l person. Continental breakfast included. Special rates available.

• ACCOMMODATIONS •**cottages/apts/houses****ABRAM-VILLAGE F-4
CHALET DE PAR EN BAS**

★★★★★ (C)



(613) 837-4880
arsenault@sympatico.ca
www3.sympatico.ca/arsenault/
Alfred Arsenault, 1210 St. Jerome, Ottawa, ON, K1C 2A8. Fully equipped cottage nestled on a seven-acre field located in Abram-Village and overlooking Egmont Bay. You can enjoy tranquility, sunsets, star gazing, endless beaches, clam digging and golf nearby. *Open May-Oct.*
Cottage - 1 hsk unit. 1B&S. Weekly \$800.

**ALBERTON C-3
BRIARWOOD INN, COTTAGES
AND LODGE**

★★★★★ (C) ★★★★★ (B&B)

★★★★★ (H/M)



853-2518; toll free 1-888-27CABIN
(for reservations only)
accommodations@briarwood.pe.ca
www.briarwood.pe.ca
Off Rte 12 at 253 Matthews Lane. Gary & Debbie Inman, Box 215, Alberton, C0B 1B0. Six housekeeping cottages situated on the water. Two bedrooms, full bath, colour TV/VCR, screened-in decks. Laundromat, barbecues, telephones. Boating, swimming, clam digging on premises. Briarwood offers eight one-bedroom suites, each with complete kitchen, living room, full bath, queen beds. Two units are extra large with patio doors, cathedral ceiling, whirlpool tub. Ideal for honeymooners! Kings with jacuzzi and kitchenette, standard rooms available. Our award-winning Heritage home provides a panoramic view of the beautiful Dock River. Period furniture, front verandah, quiet location. No smoking. AE, MC, V accepted. *Open year round. Off-season rates Sept 16-June 15.*
Cottage - 6 hsk units. 6B&S. Daily \$110(2), \$10 add'l person. Weekly \$700(4), \$25 add'l person.
Bed & Breakfast - 3 o/n units. 1B, 1S. Daily \$60(2), \$10 add'l person. Weekly \$400(2), \$50 add'l person.
Lodge - 8 hsk units. 8B&S (2 jacuzzis). Daily \$95-125(2), \$10 add'l person. Weekly \$575-675(2), \$25 add'l person.
Motel - 8 o/n units. 8B&S (4 jacuzzis). Daily \$75-100(2), \$10 add'l person.



BAYSIDE E-5 CAERNARVON COTTAGES, B&B AND GARDENS

★★★★★ (C)



854-3418; toll free 1-800-514-9170
2cappers@pei.sympatico.ca
www.cottagelink.com/caernarvon
4697 Rte 12 (North Cape Coastal Drive). Rusty Capper, Richmond RR1, COB 1Y0. Great for family vacations. Enjoy tranquility, comfort and value. Relax in our gardens. This is an outstanding property. Great price. Please check our website for photos, availability and cancellation policy. (See listings under Inns/Bed & Breakfasts and Gardens). Open June 15-Sept 15. Cottage - 4 hsk units. 4B&S. Daily \$100(2), \$10 add'l person. Weekly \$590(2).

GRAND RIVER BEACH COTTAGES

★★★★★ (C)



854-3131
off season (508) 877-3480
toll free 1-877-707-6775
pjb0128@aol.com
On Rte 12. The Brown Compound, Peter J. Brown, 9 Corrine Dr., Framingham, MA, USA 01701. Contact: Kendra McIntyre. 25 minutes west of Summerside. Luxury cottages overlooking Grand River and Malpeque Bay. Four fully equipped two-bedroom housekeeping cottages with pine interior and cathedral ceilings. Microwave, gas barbecue, picnic tables, colour TV, decks, laundry facilities, children's playground. One three-bedroom cottage with whirlpool bath, dishwasher and washer/dryer. Cots, phone available. Beachfront for clam digging, swimming, all types of boating. MC, V accepted. Open May 15-Dec 10. Off-season rates before June 15 and after Sept 15. Cottage - 5 hsk units. 5B&S. Daily \$125-155(4), \$10 add'l person. Weekly \$850-1070(4), \$50 add'l person.

GRAND RIVER FARMS COTTAGES

★★★★★ (C)



854-2683; fax 854-2683
www.grandriverfarmscottages.com
On Rte 12. Donna McNeill, Box 29, Richmond, COB 1Y0. Come enjoy peaceful sunrises and sunsets! Two beautiful waterfront cottages. Executive three-bedroom cottage with upper and lower decks and fireplace. Two-bedroom cottage with lower deck. Fully equipped. Satellite TV. Open June 1-Oct 30. Cottage - 2 hsk units. 2B&S. Daily \$125-150(4-6). Weekly \$800-1000(4-6).

BELMONT E-5 BELMONT WATERVIEW COTTAGE

★★★★★ (C)



436-4682
pmanderson@pei.sympatico.ca
www.holidayjunction.com/belmontcottage
Peggy Manderson, 4 Wedge Rd., Belmont Lot 16, COB 1T0. Two-bedroom cottage with one queen bed two doubles. Country decor, fully equipped kitchen, electric heat, phone, barbecue. Smoking on deck only. Check our website for photos and additional information. Open June 1-Oct 31. Off-season rates before June 18 and after Sept 10. Cottage - 1 hsk unit. 1B&S. Weekly \$750(1-4), \$25 add'l person.

BIRCH HILL D-5 SPRUCE MEADOW COTTAGE

★★★★★ (C)



831-2259; off season (631) 264-0883
clifld@aol.com
www.geocities.com/sprucemeadowcottage
Clifford Demorest, Box 149, Tyne Valley, COB 2C0 (winter: 20 South Bay Ave., Amityville, NY, USA 11701). Nestled on a river leading to Malpeque Bay is Spruce Meadow, a private, unpretentious retreat. Nearby dining, Confederation Trail, Green Park, golf, beaches for swimming/boating. Large deck, great views. Open June 15-Oct 15. Off-season rates before July 1 and after Aug 31. Cottage - 1 hsk unit. 1S. Weekly \$595(4), \$25 add'l person.

WEST COUNTRY COTTAGES

★★★★★ (C)



831-3342/888-8727(cell)
westcountrycottages@hotmail.com
http://westcountrycottages.cottagelink.com
On Rte 12. Clayton & Donnalee Noye, Tyne Valley RR2, COB 2C0. Spacious deluxe cottages overlooking Malpeque Bay. Fully equipped one- and two-bedroom units with queen/double beds plus sofa bed. Honeymoon suite with jacuzzi/hot tub, perfect for a romantic getaway/anniversary celebration. All have pine interiors, phone, propane barbecues, satellite TV. Laundry facilities, playground, beachfront for swimming and boating. Golfing at nearby Mill River or Summerside golf courses. MC, V accepted. Open May 15-Oct 15. Cottage - 4 hsk units. 4B&S. Daily \$120(4), \$10 add'l person. Weekly \$800(4), \$25 add'l person.

BROOKLYN C-3 MILL RIVER LOG HOME

★★★★★ (C)



859-3700
info@millriverloghome.com
www.millriverloghome.com
176 Lyman Leard Lane. Juanita & Ricky Gallant, O'Leary RR1, COB 1V0. Open June 1-Sept 30. Cottage - 1 hsk unit. 1S. Daily \$150(4), \$25 add'l person. Weekly \$900(4), \$40 add'l person. Off-season rates available.

SANSWAY SUMMER HOME

★★★★★ (C)

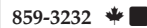


831-2202/439-0816(cell)
sanswaysummerhome@hotmail.com
www.sansway.com
38 Wallace Dr. Sandra Henderson, Ellerslie RR2, COB 1J0. Open year round.

Cottage - 1 hsk unit. 2S, 1 jacuzzi. Weekly \$1100(6), \$50 add'l person.

CAPE WOLFE D-1 LIFE OF REILLY

★★★★★ (C)



859-3232
carmelereilly@hotmail.com
Basil & Carmel Reilly, Bloomfield RR1, COB 1E0. Open May 1-Dec 31. Off-season rates Sept-June. Cottage - 1 hsk unit. 1B&S. Weekly \$725(1-4), \$30 add'l person.

EAST BIDEFORD D-4 BAYVIEW VACATION HOME

★★★★★ (C)



831-2173/3263; fax 831-3029
toll free 1-866-723-9411
redshorecottages@hotmail.com
bayviewvacation.cottagelink.com
Managers: Charlene & Roger Palmer, Ellerslie RR2, COB 1J0. Newly constructed four-bedroom executive vacation home on a large waterfront lot. Spacious interior with hardwood floors, pine accents, and incredible fireplace. Spiral staircase to loft bedroom with incredible view. Fully equipped, full kitchen, washer/dryer, whirlpool tub, satellite TV/DVD, fabulous views and 64-ft. deck. Boat access, floating dock and playground available. Kayaks and bicycles available with weekly rentals. Open May-Nov. Off-season rates before July 1 and after Aug 31. Cottage - 1 hsk unit. 2B&S, 1 jacuzzi. Weekly \$1800(8), \$25 add'l person.

RED SHORE COTTAGES

★★★★★ (C)



831-2173; fax 831-3029
toll free 1-866-723-9411
redshorecottages@hotmail.com
redshorecottages.cottagelink.com
Located on Red Shore Lane. Roger & Charlene Palmer, Ellerslie RR2, COB 1J0. Deluxe two- and four-bedroom cottages located on large waterfront lots overlooking the Bideford River. Spacious interiors with pine and hardwood floors. Fully equipped kitchen, queen beds, washer/dryer, satellite TV, VCR or DVD. Boat access, floating dock, playground, and paved driveway. Kayaks, canoes and bikes available for guest

use. Smoking on decks only. Open May-Nov.

Cottage - 9 hsk units. 13B&S (5 whirlpools). Weekly \$875-1275(6-8). Off-season rates available.

FREELAND D-4 HENDERSON COTTAGE

★★★★★ (C)



831-2437
hendersoncottage@pei.sympatico.ca
www.geocities.com/hendersoncottage/home.html
164 Henderson Lane off Murray Road in Freeland, Rte 174. George & Brenda Henderson, Ellerslie RR2, COB 1J0. Secluded two-bedroom beachfront cottage on north shore. Satellite TV/VCR, microwave, washer, dishwasher, spacious grounds, barbecue, picnic table. Fine dining, golf courses, bike trails nearby. View Conway Narrows sand dunes. No pets. Open June 15-Sept 15. Cottage - 1 hsk unit. 1B&S. Daily \$100(1-4), \$25 add'l person. Weekly \$575(1-4), \$30 add'l person. Off-season rates available.

GLENWOOD E-2

PIONEER FARM

★★★★★ (C)



859-2228
pioneerfarm@pei.sympatico.ca
www.pioneerfarm.ca
Judy Bertling, O'Leary RR2, COB 1V0. Experience a unique holiday on our wind- and solar-powered homestead farm. Situated in woodland with breathtaking seascape, our oceanfront cottage sleeps six. Includes renewable energy orientation, dory for short row to secluded sandbar, wagon/sleigh rides, cross-country skiing/snowshoeing trails. Partake in activities with our farm animals, where technology puts nature first. Open year round. Cottage - 1 hsk unit. 1B. Daily \$110(6), \$10 add'l person. Weekly \$700(6), \$30 add'l person. Off-season rates available.

GRAND RIVER E-5 RIVERVIEW COUNTRY INN

★★★★★ (C)



854-2503
On Rte 131. Claudia McLellan, Richmond RR1, COB 1Y0. Six-bedroom century farmhouse with private, spacious yard. TV room with TV/VCR/DVD player. Parlour with piano. Microwave, washer, barbecue, vegetable garden, picnic tables and bicycle storage. Sleeps 12. Playpen, high chair, sandbox, games and movies available. Home is 10 minutes from provincial park, beach and restaurant. Ideal for two families. Open June 15-Sept 15. Off-season rates in June and Sept. House - 1 hsk unit. 1B&S. Weekly \$525(6), \$30 add'l person. Monthly rate available.



**KILDARE CAPES B-3
ST-FELIX BEACH HOUSE**

★★★★★ (C)



368-8242/629-0509/394-1049

irmaccormack@pei.sympatico.ca

www.stfelixbeachhouse.com

Leonard & Rosemary MacCormack, Brackley RR9, C1E 1Z3. Lovely 3000-sq.-ft. oceanfront executive beachhouse. Five bedrooms, three baths, dining room, living room, laundry room, wrap-around porch, sandy beach, heated. Equipped with five appliances, satellite TV / DVD, barbecue. Open May-Nov.

House - 1 hsk unit. 1B&S, 2S. Weekly \$3200.

**LOWER BEDEQUE F-6
AUCHINLECK FARM COTTAGES**

★★★ (C)



887-2507; fax 887-2645

affleck@itas.net

www3.pei.sympatico.ca/~affleck

Rte 112. Percy & Marilyn Affleck, Bedeque, COB 1C0. Three-bedroom cottages, individual lots, 40 metres from a sandy beach. A popular feature is the large expanse of sand bars at low tide. Swim, walk, golf and dig for bar clams. Guests are welcome to view dairy farm activities. Pet the baby calves and maybe see one being born. A family-friendly vacation spot where you can hike, bike, beach combe and even walk to a lighthouse. Couples enjoy the activities and solitude of September next to the water. 30-minute scenic drive to Cavendish. MC accepted. Open May 14-Oct 1. Off-season rates before July 2 and after Aug 20 (less 30%).

Cottage - 4 hsk units. 1B&S, 3S. Daily \$120(6), \$10 add'l person. Weekly \$725(6), \$35 add'l person.

**MAXIMEVILLE F-4
MAISON GAÏA BY THE SEA**

★★★★★ (C)



854-5858

lbernard@pei.sympatico.ca

http://sites.ipe.gazel.ca/maisongaia

Rte 11. Leona Bernard, Box 102, Wellington RR3, COB 2E0. Maison Gaïa is a place where Mother Earth meets the sea. Come and relax in a natural decor: healing sea, splendid sunset over water, sandy beach, abundance of stars. Experience a renewal of life energy in one of the four cottages overlooking the sea. Bilingual service. Open May-Oct. Off-season rates after Sept 4.

Cottage - 5 hsk units. 1B&S, 4S. Daily \$90-150(2-6), \$10 add'l person. Weekly \$525-950(2-6), \$30 add'l person.

**MILL RIVER C-2
LADY SLIPPER COTTAGES**

★★★★★ (C)



859-2261

ladyslippercottages@yahoo.com

www.ladyslippercottages.com

Nellie Alexandre, 64 Memory Lane, Fortune Cove Rd., O'Leary, COB 1V0.

Need a stress-free holiday? Your hosts Nellie and James invite you to PEI for a memorable vacation. Five housekeeping cottages on the Mill River feature two bedrooms, queen beds, equipped kitchen, full bath, satellite TV, barbecues, fire-pits. Play volleyball, badminton and many other games, or just relax in the quiet surroundings and read a book. Small charge for pets. Open June-Sept.

Cottage - 5 hsk units. 5B&S. Daily \$99(2), \$10 add'l person. Weekly \$575(4), \$30 add'l person.

**MILL RIVER CHALET /
CASCUMPEC BAY HOUSE**

★★★★★ (C)



859-2700; fax 859-3011

millriverc@pei.sympatico.ca

www.peisland.com/millriver

Arlene & Randy Bernard, O'Leary RR3, COB 1V0. Private and quiet. Chalet and house on the water. Three bedrooms, fully equipped, dishwasher, washer/dryer, satellite TV/VCR/DVD, barbecue. Golf courses and restaurants nearby. Beautiful grounds, gorgeous sunsets. Open May-Oct. Cottage - 1 hsk unit. 1S. Weekly \$850(4), \$40 add'l person. House - 1 hsk unit. 1B&S, 1/2B. Weekly \$900(6), \$40 add'l person. Daily and off-season rates available for both.

**MILL RIVER EAST C-2
A WEEK AT RALPH'S PLACE**

★★★★★ (C)



859-3187; fax (403)275-3024

info@ralphsplace.ca

www.ralphsplace.ca

Located at 53 James Lane. Alex & Katherine MacAusland. Bird watching, water activities, golfing, cycling, or relaxing with your favourite novel - does this sound like your vacation destination? If so, log onto our website for details of this four-star accommodation. Open May 15-Sept 30.

Cottage - 1 hsk unit. 1B&S. Weekly \$1000.

DUSTY LANE COTTAGE

★★★★★ (C)

882-3508

nrgaudette@pei.sympatico.ca

http://dustylane.cottagelink.com

Norman & Connie Gaudette, 1623 Greenmount Rd., Tignish, COB 2B0.

Open May 14-Nov 12. Off-season rates before June 15 and after Sept 15. Cottage - 1 hsk unit. 1B&S. Weekly \$700(1-5), \$20 add'l person.

**MIMINEGASH C-2
CREE'S COZY COTTAGES**

★★★★★ (C)

882-4340

crees_cozy_cottages@pei.sympa

tico.ca

www.creescozycottages.com

On Rte 14 (North Cape Coastal Drive).

Bill Cree, 11857 Rte 14, St. Louis RR1,

COB 1Z0. Five two-bedroom and

one three-bedroom housekeeping

cottages with decks. Less than 60 m

(200 ft.) from sandy ocean beach.

Microwave, propane barbecue,

picnic table with each unit. Two

bicycles available. Laundromat, pay

telephone on site. Quiet family

relaxation. Breathtaking sunsets.

Large recreational area (swing set,

horseshoe pit, volleyball,

badminton, fire-pit). Churches,

stores, two golf courses, Mill River

Fun Park nearby. Tignish, Alberton

and O'Leary within 20-minute

drive. Reservations suggested.

Deposit required. Cancellation

policy. No pets, please. MC, V

accepted. Open June 3-Sept 10. Before

or after by reservation. Off-season rates

available.

Cottage - 5 hsk units. 5S. Daily

\$90(2), \$10 add'l person. Weekly

\$550(2), \$50 add'l person.

Deluxe Cottage - 1 hsk unit. 1B&S.

Daily \$150(6). Weekly \$900(6).

MISCOUCHE E-5**LECKY'S BED & BREAKFAST INN**

★★★★★ (C)

(See Inns/Bed & Breakfasts, page 93)

MONT-CARMEL F-4**CHALET'S RENDEZ-VOUS**

★★★★★ (C)



854-2262; toll free 1-877-894-0697

rendez@pei.sympatico.ca

www.rendezvouscottages.com

Rte 11 (North Cape Coastal Drive),

25 km west of Summerside. Cheryl

LeBlanc & Bernie LeBlanc, Box 95,

Wellington, COB 2E0. Beachfront. 11

clean, spacious housekeeping

cottages. Two- and three-bedroom

units with well-equipped kitchen,

microwave, living room, TV/VCR,

patio, barbecue, some fireplaces.

Deluxe four-bedroom unit features

cathedral ceiling, loft, washer / dryer. Quiet six-acre property overlooking Northumberland Strait. 15 minutes from Summerside. Laundromat, pay phone. Playground, horseshoe and bonfire areas. Excellent clam digging, swimming, campfires, beach walks, star gazing. Open June 1-Sept 30 and during hunting season. Off-season rates available. Cottage - 10 hsk units. 10S. Daily \$110-125(4-6), \$10 add'l person. Weekly \$625-725(4-6), \$50 add'l person.

Deluxe Cottage - 1 hsk unit. 1B&S. Daily \$225(8), \$10 add'l person. Weekly \$1250(8), \$50 add'l person.

MURRAY ROAD C-4**WAGNER'S COTTAGE
& OUTFITTERS**

★★★★★ (C)



831-3079; fax 831-3079

eric@wagnerscottage.com

www.wagnerscottage.com

On Rte 174. Eric & Donna Wagner,

Ellerslie RR2, COB 1J0. Located on

the beach along the beautiful North

Shore. Four housekeeping cottages,

each containing double bed and

sofa bed. English-style beams with

pine walls and floors. Colour

satellite TV/VCR, telephone. Full

kitchen. Microwave, full baths.

Large patio with spectacular view

of ocean and dunes. Propane

barbecues, picnic tables, fire-pits,

playground, laundry facilities.

Canoe, kayak rentals. Clam

digging. Come explore the

spectacular sand dunes of West

Prince. Open June 15-Nov 30.

Cottage - 4 hsk units. 4B&S. Daily

\$115(2), \$15 add'l person. Weekly

\$675(2), \$35 add'l person. Children

stay free with parents/guardians.

**NORTHPORT C-3
HARBOURVIEW HAVEN**

★★★★★ (C)



436-5491

marliemcneill@msn.com

http://users.eastlink.ca/~harbourv

iewhaven

Marlene McNeill, 144 Gardiner St.,

Summerside, C1N 5J2. Open June 1-

Oct 1.

House - 1 hsk unit. 2B&S. Weekly

\$1000(1-6), \$50 add'l person.

**ST-CHRYSTOSTOME E-4
CHALET'S DE LA GRANDE BASSE**

★★★★★ (C)

854-2189

jmbarnar@hotmail.com

www.chaletsgrandebasse.com

Located at Napoleon Rd. Marcel &

Jeannita Bernard, Richmond RR2,

COB 1Y0. Fully equipped cottages

with queen beds, propane

fireplace, microwave, dishwasher,

screened porch. Nestled on

sheltered bay in the heart of the

Acadian region. Endless beaches,

gorgeous sunsets, access to golf.

Open May 15-Oct 15.

Cottage - 3 hsk units. 3B&S. Daily

\$130(4), \$10 add'l person. Weekly

\$750-850(4-6), \$50 add'l person.



SPRINGHILL E-4 AQUA DREAM PARADISE COTTAGES

★★★★★ (C)



831-3212; toll free 1-800-298-3270
aqua.dream@pei.sympatico.ca
www.aquadreamcottages.com
David Ford, Tyne Valley RR2, COB
2C0. One- and two-bedroom deluxe
executive housekeeping cottages;
one honeymoon cottage. Fully
equipped: wheelchair-accessible, air
conditioning, whirlpool tubs, full-
size fridge, stove, microwave,
dishwasher. Solid pine interior with
cathedral ceilings, hardwood floors.
All queen beds. Satellite TV. Large
covered patio with patio furniture,
barbecue. Laundromat, playground
and large, in-ground heated pool.
Beach, Confederation Trail for
cycling and snowmobiling nearby.
Honeymoon, deep-sea fishing, golf
and goose-hunting packages
available. No pets, please. Smoking
on decks only. Interac, MC, V
accepted. Open May 1-Dec 31. Off-
season rates after Labour Day (40%
discount).

Cottage - 5 hsk units. 5B&S. Daily
\$150(4), \$10 add'l person. Weekly
\$975(4), \$40 add'l person. Children
under 6 stay free.

SUMMERSIDE AREA E-6 THE APARTMENT AT CHIMNEYS

★★★★★ (C)



436-1027; toll free 1-888-693-4669
www.peiplay.com
(Linkletter). Rte 11. Jan & Frank
Henry, 1770 Linkletter Rd.,
Summerside RR2, C1N 4J8. Newly
decorated apartment with large
living/dining room with TV/VCR,
hide-a-bed, etc. Fully equipped
kitchen, full bath, two bedrooms,
verandah, private entrance, picnic
table, barbecue, 24-ft. pool. Open
June 1-Sept 1.

Apartment - 1 hsk unit. 1B&S.
Daily \$90(4-5). Weekly \$500(4-5).

THE COTTAGE AT CHIMNEYS

★★★★★ (C)



436-1027; toll free 1-888-693-4669
www.peiplay.com
(Linkletter). Rte 11. Jan & Frank
Henry, 1770 Linkletter Rd.,
Summerside RR2, C1N 4J8. Newly
constructed deluxe cottage on
spacious property with extensive
flower gardens. Large bedroom
with double bed and sitting area.
Double pull-out couch in living/
kitchen area. Fully equipped
kitchen including microwave, cable
TV/VCR, movies available. Back
door opens onto patio. Outdoor and
indoor games, 24-ft. pool with large
deck, sandbox, swing set. Children
welcome. MC, V accepted. Open
May 15-Oct 1. Off-season rates before
June 15 and after Sept 15.

Cottage - 1 hsk unit. 1B&S. Daily
\$100(4-5). Weekly \$500(4-5).

COUNTRY AT HEART BED & BREAKFAST & TOURIST APARTMENT

★★★★★ (C)

(See Inns/Bed & Breakfasts, page 94)

COUNTRY HAVEN COTTAGES

★★★★★ (C)



436-5385; fax 436-0669
countryhaven@pei.sympatico.ca
www.cottagelink.com
(Traveller's Rest). Georgie Sillicker,
Travellers Rest, Summerside RR2, C1N
4J8. Luxury two-bedroom
housekeeping cottages located on
Malpeque Bay, near Summerside and
Cavendish. Featuring queen-size
beds and sectional, fireplace, satellite
TV/VCR/DVD, dishwasher,
washer/dryer, crib, high chair,
therapeutic air-massage tub, stand-
up shower, covered deck with patio
furniture. Interior accented by
cathedral ceiling and pine wood.
Barbecue, electric heat, bikes,
outdoor cooker and playground.
Campfire wood supplied. Deposit
required with booking (non-
refundable). Off-season weekend
getaway and romance packages.
Absolutely no pets. MC, V accepted.
Open May 15-Oct 15. Off-season rates
before June 20 and after Labour Day.
Cottage - 2 hsk units. 2B&S. Daily
\$200(6). Weekly \$1250(6).

CRYSTAL BEACH COTTAGES

★★★ (C)



436-4984; fax 436-2140
toll free 1-877-433-2267 (for
reservations only)
(New Annan). Aaron & Matthew
Wedge, New Annan RR2, C1N 4J8.
Come and relax at Crystal Beach
Cottages. Air-conditioned, fridge,
stove, colour TV, three-piece bath,
toaster, kettle, pots, dishes, cutlery,
linens. Cots available. Laundry
facilities and heated pool. Large
deck with ocean view. Three two-
bedroom cottages with two double
beds, and one-bedroom cottage
with one double bed. Follow the
TransCanada Hwy. to Rte 1A west
to Travellers Rest. Turn east on
Rte 2, at approximately 3 km
(2 mi.), turn left onto Rte 120 north.
Follow the sign to Crystal Beach
Campground (on Rte 180). Open
June 20-Sept 20.
Cottage - 4 hsk units. 4S. Weekly
\$425-495(1-2), \$30 add'l person.

THE ELLIOTTS SUITE

★★★★★ (C)



436-6273
relliott@pei.sympatico.ca
http://elliottsuite.com
(North Bedeque). Bayside Rd. at
Schurmans Point. Roger & Ann Elliott,
Box 4512, Summerside, C1N 4J9.
Spacious, centrally located two-
bedroom suite situated on water.
Spectacular, panoramic views of
Summerside Harbour, lighthouse,
sunsets. Full bath, kitchen including
accessories, living area with
fireplace, pool table. Satellite TV.
Open May 15-Oct 15.
Housekeeping Suite - 1 hsk unit.
1B&S. Weekly \$750(4), \$15 add'l
person.

HONEYSUCKLE INN

★★★★★ (C)



887-3485
info@honeysuckleinn.ca
www.honeysuckleinn.ca
(Summerside). 21 Baker Shore Rd.
Jane & Suzanne Bateup, Summerside
RR3, C1N 4J9. Spacious, beautifully
decorated two-bedroom
housekeeping apartment with
quality queen-size beds. Fully
equipped kitchen, lounge, TV.
Located minutes from Summerside,
beaches, golf, theatre. No pets. No
smoking. Reservations
recommended. Open June 1-Sept 15.
Apartment - 1 hsk unit. 1B&S.
Weekly \$700(1-4).

THE INN AT ST. ANDREWS

★★★★★ (C)



436-0029; fax 888-3860
dgroom@pei.aibn.com
www.peisland.com/standrews
(Summerside). Don Groom, 615 Water
St., Summerside, C1N 4H7. The Inn
at St. Andrews is a complete house
to enjoy, all to yourself. If you like
privacy loaded with extras, you will
love this place! Centrally located,
our picture-perfect, spacious
1½-storey home will meet your
expectations. Two comfortable
bedrooms, living room with
fireplace and piano, fully equipped
kitchen, dining room, (satellite) TV
room with pull-out sofa, 1½ baths.
Sleeps six. Queen/double beds,
washer/dryer, microwave,
dishwasher, barbecue. Treed lot
close to many attractions. Indoor
and outdoor pool available. Ideal
for families. AE, DC, enRoute, MC,
V accepted. Open May-Oct.
House - 1 hsk unit. 1B&S
(whirlpool), ½B. Daily \$160(1-4).
Weekly \$995(1-4). Off-season rates
available.

PARKVIEW MOTEL & COTTAGES

(See Hotels/Motels/Resorts, page 87)

SUMMERSIDE MOTEL AND FAMILY RESTAURANT

★★★ (C)

(See Hotels/Motels/Resorts, page 92)

SUNSET COTTAGES

★★★★★ (C)



436-6882
ndtaylor@pei.sympatico.ca
www.sunsetcottagespei.com
(Travellers Rest). Nancy Taylor,
28 Sunset Cres., Summerside, C1N
4J8. Spacious, luxury executive
cottages. Solid pine interior
throughout. Two bedrooms,
queen/double beds. Full bath,
kitchen, laundry, cable TV/VCR.
Air-conditioned. Walking distance
to Confederation Trail. Open May 1-
Oct 31. Off-season rates in May and
after Sept 14.
Cottage - 2 hsk units. 2B&S. Daily
\$110(2), \$10 add'l person.

WINDEMER COTTAGE

★★★★★ (C)



436-1177; fax 436-4268
dhammond@pei.aibn.com
www.windemer.ca
(North Bedeque). Off Rte 1A at 21
Bayside Rd., Schurman Point. Open
June-Oct.
Cottage - 1 hsk unit. 1B&S. Weekly
\$750(4), \$70 add'l person.

TIGNISH AREA B-2 CHAISSON HOMESTEAD

882-2566



(Tignish). Anita Chaisson, 156
Chaisson Rd., Tignish, C0B 2B0.
Three fully equipped
housekeeping cottages with two
doubles and one single bed in
each. Colour TVs and showers.
Beach nearby. Quiet, beautiful
location. Open May 1-Sept 30.
Cottage - 3 hsk units. 3S. Weekly
\$450-900(1-4).
Bed & Breakfast - 1 o/n unit. 1B&S.
Daily \$50(2), \$10 add'l person.

DRIFTWOOD COUNTRY COTTAGES

★★★★★ (C)



882-2617; fax 882-2617
toll free 1-877-882-2617
anne@driftwood.pe.ca
www.driftwood.pe.ca
(Anglo Tignish). On Rte 12. Anne &
Joe Arsenault, Box 423, Tignish, C0B
2B0. Experience the unspoiled
natural beauty of Prince Edward
Island in a quiet country location.
Chalet-style executive cottages with
all amenities on a 100-acre property.
Designed to provide a peaceful,
private place where visitors can rest,
relax and enjoy the ocean view.
Fireplace, covered porch, barbecue,
dishwasher, satellite, wireless high-
speed, cathedral ceilings. Minutes
from nature trails, golf, fishing,
crafts, dining and attractions. Open
year round. Off-season rates Sept 1-
June 15.

Deluxe Cottage - 6 hsk units.
6B&S, 5B (jacuzzi). Weekly \$985-
1195(1-4), \$25 add'l person.

GAUDET'S BY THE SEA

★★★★★ (C)



853-2527
contactus@GaudetsbytheSea.pe.ca
www.GaudetsbytheSea.pe.ca
(Anglo Tignish). Taylor & Krista
Gaudet, Anglo Tignish RR4, COB 2B0.
Enjoy the ultimate cottage
experience. Explore rocky inlets, or
stroll the sandy shore. Nature
abounds in this quiet area of PEI.
Each two-bedroom cottage is fully
equipped. You will enjoy the
cathedral ceiling and cozy fireplace,
large screened porch with barbecue
and eating area, and the
convenience of a washer/dryer,
dishwasher, microwave, satellite TV,
DVD player. Close to golf, dining,
Confederation Trail, deep-sea
fishing. Minutes from North Cape



and the Atlantic Wind Test Site. Check on our special rates for off-season getaways. *Open year round.*
Deluxe Cottage - 3 hsk units. 3B&S. Weekly \$950(1-4), \$25 add'l person.

GULF SIDE COTTAGE

★★★(C)

882-3262 ☎ 🏠 🌳

(Seacow Pond). On Rte 12 West, north of Tignish. Albert Shea, Tignish RR4, COB 2B0. Open May-Oct 9.

Cottage - 2 hsk units. 2S. Daily \$65-75(2), \$5 add'l person. Weekly \$350-400(2), \$5 add'l person.

MURPHY'S TOURIST HOME & COTTAGES

★★★(C) ★★★★★(B&B)

☎ 🏠 🌳 🌳

882-2667; toll free 1-866-710-2667 (Tignish). On Rte 153. Richard Murphy, 325 Church St., Tignish, COB 2B0. Three one-bedroom cottages with two double beds, and two two-bedroom cottages with double and single beds. Covered decks. Spacious playground. Picnic tables and barbecue available. Walking distance to church, shopping and Confederation Trail. Thermostatically controlled heat in cottages. Dining room, 1 km; beach, 5 km; golf, 3 km. GST-exempt. MC, V accepted. *Open May 15-Oct 15.*

Bed & Breakfast - 3 o/n units. 1B&S, 2S. Daily \$60(1-2). Weekly \$350(1-2). Continental breakfast included.

Cottage - 5 hsk units. 4S, 1B&S. Daily \$60-70(2), \$20 add'l person. Weekly \$410-455(1-4).

TYNE VALLEY D-4

RIVERBANK COTTAGE AT TYNE VALLEY

★★★(C)



831-2259; off season (631) 264-0883
 cliffd@aol.com

www.cottagerentalsincanada.com
 Clifford Demorest, 10 Shoreline Rd., Tyne Valley, COB 2C0. Experience a sense of simple serenity at Riverbank, a cottage retreat overlooking the peaceful Trout River estuary. Nearby dining, Confederation Trail, Green Park, golf, beaches for swimming/boating. Magnificent views. *Open June 15-Oct 15.*

Cottage - 1 hsk unit. 1B&S, ½B. Weekly \$950(1-4), \$25 add'l person.

UNION CORNER F-5 CHALET GALLANT COTTAGE

★★★(C)

(506) 384-3858 ☎ 🏠 🌳

alnian@nbnet.nb.ca

http://sites.ipe.gazel.ca/gallant
 Alvin Gallant, 57 Rue Curry, Moncton, NB, E1A 3V6. Private oceanfront two-bedroom cottage. Three double/two single beds (cot available). Fully equipped for housekeeping. Washer/dryer, stove, fridge, microwave, dishwasher, barbecue, picnic table, large patio, screened porch, telephone. *Open June 15-Sept 15.*
Cottage - 1 hsk unit. 1B&S. Weekly \$1000(6), \$50 add'l person.

CHARLIE'S PLACE COTTAGES

436-3671 ☎ 🏠 🌳

Gladys Walsh, 389 Highland Ave., Summerside, C1N 2M4. *Open June 1-Sept 30.*

Cottage - 3 hsk units. 3S. Weekly \$400-450(1-5), \$50 add'l person.

DARWIN'S COTTAGE

★★★(C)

☎ 🏠 🌳 🌳

436-6043; fax 436-1357

darwin@pei.sympatico.ca

www.cottagelink.com

Edwin & Darlene DesRoches, Box 85, Miscouche, COB 1T0. *Open May 1-Sept 30.*

Cottage - 1 hsk unit. 1B&S. Daily \$110(1-4), \$10 add'l person. Weekly \$550(1-4), \$50 add'l person.

VICTORIA WEST E-4

QC ISLAND HIDEAWAY

★★★★★(C)

🏠 ☎ 🏠 🌳

(403) 281-9170; fax (403) 238-8792

maryaqc@shaw.ca

www.qcislandhideaway.com

9 Country Lane. Rob & Mary (Quigley) Copan, 2916 Cedar Ridge Dr. SW, Calgary, AB, T2W 1X6. This hidden solitude is nature's backdrop, while you enjoy the vibrant blue waters of the Northumberland Strait, along with the majestic artistry of peaceful sunsets. Enjoy this fully equipped two-storey cottage with three bedrooms, two bathrooms, washer/dryer, satellite TV/VCR, fireplace, telephone, fax, furnished patio, barbecue. Main floor is

wheelchair accessible, including one bedroom and bathroom. *Open May 15-Oct 15.*

Cottage - 1 hsk unit. 1B&S, 1S. Daily \$150(4), \$20 add'l person. Weekly \$1000(4), \$50 add'l person.

WATERFORD B-2 WATERFORD COTTAGES & CAMPGROUND INC.

★★★(C)

☎ 🏠 🌳 🌳 🌳



882-2644; off season 853-4636

toll free 1-800-448-4912

curtisoliver@waterfordbeach.com

www.waterfordbeach.com

On Rte 14 (North Cape Coastal Drive). Curtis Oliver, Elmsdale RR2, COB 1K0. One-, two-, and three-bedroom housekeeping cottages, featuring most amenities. Nine ocean view units, six poolside units. Secluded, sandy ocean beach, large pool, recreation hall with stage, nightly movies on big-screen TV, arcade, pool table, children's playground, horseshoes, footballs, basketballs, volleyballs available for sign-out, fire-pits, laundromat. Interac, MC, V accepted. *Open mid-June to mid-Sept.*

Cottage - 15 hsk units. 9B&S, 6S. Daily \$75-250(4-8), \$10 add'l person. Weekly \$510-1200(4-8), \$35 add'l person.

WEST CAPE E-1

WEST CAPE HOUSE

★★★(C)

🏠 🌳 🌳 🌳

894-8257/892-7922; fax 368-8318

sumer@cameraart.ca

www.cameraart.ca/WCH/wch.htm

Rte 142, west of O'Leary. Lionel & Terry Stevenson, Box 2765, Charlottetown, C1A 8C4. Private, fully equipped Victorian farmhouse among mature trees, 1.5 km from shore. Three comfortable bedrooms: two queen, one single, one parlour with queen sofa bed. Large four-piece bathroom, dining room, modern kitchen and solarium. Laundry, microwave, dishwasher, phone, VCR, DVD, barbecue. No pets. Cedar Dunes Provincial Park, warm beaches, 3 km. Mill River Golf Club, tennis, 22 km. *Open June-Oct.*

House - 1 hsk unit. 1B&S. Weekly \$980(7).

WEST POINT E-2

LIGHTHOUSE LOVER'S VACATION HOME

★★★★★(C)

☎ 🏠 🌳 🌳

859-3117; fax 859-2693

toll free 1-877-886-8585

peilight@pei.sympatico.ca

www.lighthouseloversvacation.com

Carol Livingstone, O'Leary RR2, COB 1V0. Escape to our beautiful island

and create lasting holiday memories in our country house located close to beaches. Ideal for business or personal gatherings. Learn about the history and mystery of PEI, emphasizing Island lighthouses through pictures, books, directions, tales and tours. Living room, dining room, fully equipped kitchen, laundry facilities, four bedrooms with queen beds, one double bed, 2½ baths (master suite; whirlpool tub with shower, and mini-fridge), furnished decks, library, satellite TV/DVD, phone/fax/email, ceiling fans, propane barbecue, lawn swing, bicycles, games. MC, V accepted. *Open year round.*
House - 1 hsk unit. 1B&S, 1B (jacuzzi), ½B. Weekly \$1600. Off-season rates available.

WEST POINT HARBOURSIDE SUITE

★★★★★(C)

☎ 🏠 🌳

859-3605; fax 859-1510

toll free 1-800-764-6854

wplight@isn.net

www.westpointlighthouse.com

Located next to Cedar Dunes Provincial Park at the West Point Wharf. Three-minute drive from the West Point Lighthouse. This modern suite at a 30-ft. height provides total privacy. Balcony overlooking the beach provides spectacular view of the sunsets. Fully equipped kitchenette, whirlpool bath, bedroom/living room with queen bed and pull-out sofa, table and chairs, satellite TV/VCR, telephone. A true cultural experience - wake to the sounds of local fishers heading out to sea. The perfect romantic getaway, with the Lighthouse Museum and restaurant right at your doorstep. *Open year round. Nov-Apr minimum three days.*
Suite - 1 hsk unit. 1B&S (whirlpool). Daily \$145(2), \$10 add'l person. Weekly rate, seventh night free.

WEST POINT RED BEACH COTTAGE SUITES AND B&B

★★★★(C) ★★★★★(B&B)

☎ 🏠 🌳 🌳

859-3339; toll free 1-800-321-0439

barry@jesusourcecientist.com

www.bbcanada.com/westpointredbeach

Located 4 km north west of the West Point Lighthouse Restaurant on Rte 14 (North Cape Coastal Drive). Ada Ellis, West Cape, O'Leary RR1, COB 1V0. Two queen, one twin cathedral fireplace suite. One queen kitchen suite. Both with private bath and private entrance. Two suites or one cottage. Ancient volcanic beach. *Open May 15-Oct 31.*
Suite - 1 hsk unit. 1S. Daily \$60-100(1-5). Continental breakfast included. Special rates available.
Bed & Breakfast - 1 o/n unit. 1B&S. Daily \$70(2). Full breakfast included.

Schurmans Shore Cottages
www.schurmansshorecottages.com
1-800-361-5669

Central - Clean - Cozy
 Affordable - Waterfront
 Travellers Rest, PEI

