

Golf Domes

An air-supported structure is the only real building option for indoor golf. Clear span widths and high ceilings makes the perfect environment for hitting golf balls during winter months.

Advantages of a Farley Dome:

- without need for any steel support beams, an air structure is an economical choice compared to other building options
- the erection of an air structure takes just a fraction of the time of other building methods, allowing for much shorter construction schedules
- air structures are the only building method that makes it feasible to remove the structure during summer months, or to allow for easy relocation to a new site
- If the need arises for a larger facility, expanding or modifying an air structure is a simple procedure and can be accomplished with a minimum of disruption
- with generous ceiling heights, interference with ball flight is never a problem, and a dark colored liner fabric installed at eye level makes it easy for golfers to keep their eye on the ball!



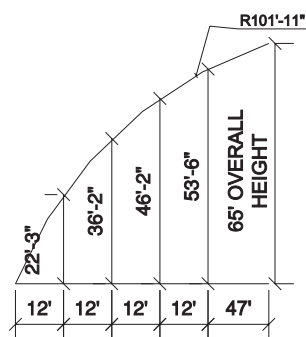
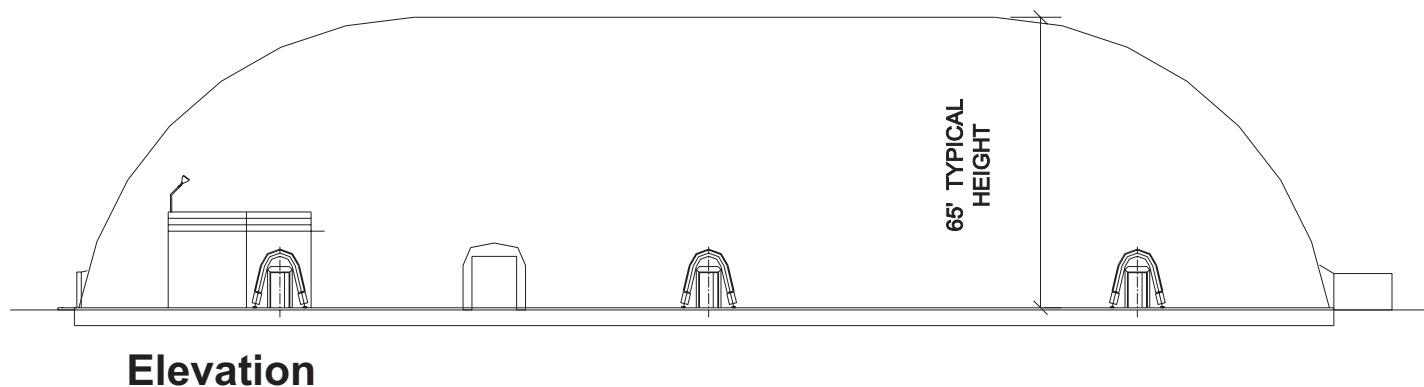
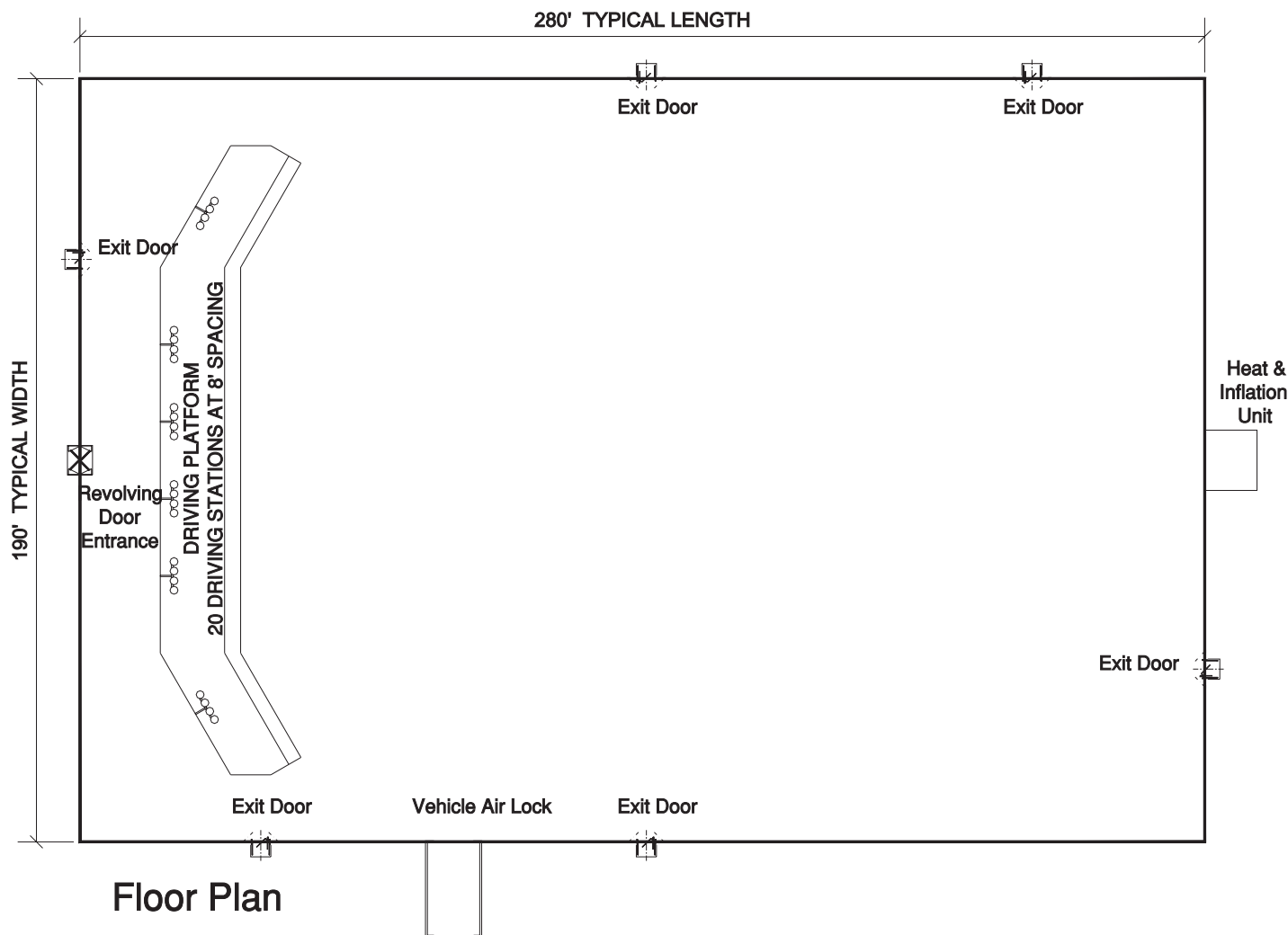
Birchwood Sports Dome, Port Huron, MI



The Farley Advantage

- ***all structures are custom designed to the client's specifications***
- ***innovative energy saving lighting, insulation and mechanical systems***
- ***sales, design, manufacturing, installation and service all done in-house***
- ***service teams located on east and west coasts, 24hrs a day***
- ***industry leading PVC fabrics with PVDF or optional Tedlar topcoats providing:***

WARRANTIES OF UP TO 15 YEARS!



Distances From The Side Wall
(End Wall Radius Can Vary)

Sample Golf Layout



Air-Supported Structures